



PennState
York



WHERE
CURIOSITY
NEVER
RETIRES

Courses and Activities | Fall 2021

SEPTEMBER 7 – NOVEMBER 23

OLLI at Penn State York

717-771-4015
olli@york.psu.edu

1031 Edgecomb Avenue • York, PA 17403

olli.psu.edu/york

REGISTRATION FOR MEMBERS BEGINS TUESDAY, AUGUST 17 AT 8:00 A.M.
REGISTRATION FOR NONMEMBERS BEGINS TUESDAY, AUGUST 31 AT NOON

Due to COVID, registration can only occur online or by mail.

UPMC Express Care

Walk-in Center



Minor Illness and Injury • Physicals • Occupational Health

Quality medical care to patients with minor illnesses and injuries including, but not limited to:

- Coughs, colds, and flu
- Cuts, scrapes, and rashes
- Eye and ear infections
- Lab and imaging services
- Pregnancy testing
- Pulled and strained muscles
- Sports, school, and driver's license physicals
- Vaccinations and flushots

Comprehensive occupational health services including, but not limited to:

- DOT physicals
- Drug and alcohol testing
- Immunizations
- Pre-employment physicals
- Reasonable suspicion training
- Respiratory testing
- Screenings
- Work injuries

Skip the Waiting Room!

Reserve your place in line with Hold My Spot, our online check-in system. We will update you via a text message, allowing you to arrive right when we can see you!

To reserve your place in line, visit UPMCPinnacle.com/ExpressCare.

UPMC | **EXPRESS CARE**

For more information, visit
UPMCPinnacle.com/ExpressCare.

CONTENTS

| | |
|--|----|
| Message from the Director | 4 |
| Recognizing our Volunteers | 6 |
| About OLLI | 7 |
| Course Offerings | 9 |
| Instructor Biographies | 27 |
| Volunteering Opportunities with OLLI | 31 |
| Our Generous Donors | 32 |
| OLLI's Lifelong Learning Legacy Circle | 34 |
| Schedule at a Glance | 35 |
| Course Registration Form | 38 |

ON THE COVER

Carol Lee Thompson has been a full-time professional artist for more than three decades. Thompson lives in New Freedom, Pennsylvania, surrounded by wonderful subject matter. She is known for tonal landscapes, equine paintings, portraits, and animals. Her work is in collections throughout the country and beyond, as well as in two museums. Thompson is a member of numerous prestigious art organizations and has received many awards over the years.

The art on the cover is titled *Great Grandmother*. The models are Joanne Elizabeth Klein, a labor and delivery nurse of thirty-two years at York Hospital. In this poignant scene, Klein is holding her great-grandson, Wyatt Lee Leader. Thompson says that this art piece seems so appropriate for OLLI!



OLLI at Penn State York has a Facebook page that is regularly updated.
Go ahead and "Follow" us! @OLLIPennStateYork

MESSAGE FROM THE DIRECTOR



I am writing this message on June 9, with renewed optimism as our communities and states have begun to reopen. Our summer semester will soon begin, and I am encouraged that by June 28, vaccinated individuals will no longer have to wear masks at OLLI courses; unvaccinated individuals must continue to mask. I would like to take this time to share some highlights of OLLI at Penn State York from the past fiscal year:

- We continue to have volunteers that have been with OLLI since its inception. Their dedication kept OLLI running, and improving, even during a pandemic. Think about that. A demographic (50-years-old or better) who are generally not tech-savvy, continued their volunteer roles by phone and by Zoom. We now have OLLI volunteers in their 60s, 70s, and 80s who are proficient on Zoom, that is amazing! See the full list of those who donated their time to OLLI this past year on page 6.
- We have had numerous additions to our volunteer committees in the last year, and they have been outstanding! It only takes one or two dynamic volunteers to give a committee new vigor. Explore how you can volunteer with OLLI on page 31.
- Our instructors continue to offer their knowledge and love of teaching to our OLLI members, whether via Zoom or in-person. Despite a pandemic, our Curriculum Committee has brought back our tried-and-true instructors and added first time instructors with engaging new courses! We have been purposeful in recruiting Penn State faculty this past year, to strengthen the relationship between the University and OLLI as well as highlight the international talents of Penn State faculty. Last fiscal year (2019-20), we had four Penn State faculty instruct for OLLI. This past year we had fifteen!
- Our Development Committee has been working on a legacy program for over a year. Legacy gifts, also called bequests, planned, or estate gifts, are a crucial source of future funding that will assist OLLI in continuing to provide high-quality programming for years to come. Individuals who let OLLI know of their planned legacy gift become members of OLLI York's Lifelong Learning Legacy Circle. We now have our first Lifelong Learning Legacy Circle member! Learn more about this opportunity on page 34.
- Our Give Local York (GLY) fundraising campaign was a tremendous success, with a 39 percent increase from last year! OLLI members and friends continue to show their generosity throughout the year. On page 32 we recognize all who have given financially to OLLI this year.
- In January 2020 (right before COVID-19,) we conducted an OLLI member survey. The number one complaint was our website. I am ecstatic to announce that in late July, we will launch a new website. While working with the Penn State Web Development Team at University Park, our priority was meeting the needs of our OLLI members and the ease at which you will be able to find all you need on OLLI's website. I hope you begin to use it as your one-stop shop for OLLI!
- We travel well. Unlike many OLLIs, we held in-person courses during a pandemic so that our members could continue to enjoy the knowledge and camaraderie that OLLI brings. We were not able to hold courses on campus, so we rented community venues. Thank you to the Appell Center for the Performing Arts, the Jewish Community Center, and Wisheaven Event Center! We were still in the middle of a pandemic, so extreme caution and fidelity to COVID-19 mitigation policies were necessary. We bought a lot of hand sanitizer, face masks, antiviral wipes, and took them with us! Some community venues did not have the IT or AV equipment we needed, so we brought that with us too! While I am hopeful that we will be back on campus in the fall, we have proven to be extremely tenacious! OLLI isn't a place; it is an organization of amazing people.

I hope to see many of you when our fall semester begins in September!

Cordially,
Jennifer Geubtner-May, Ed.D.

LOCATION, LOCATION, LOCATION

At the time of catalog design, OLLI at Penn State York is uncertain of our location for fall 2021 courses. We will either be back on the Penn State York campus or at Wisheaven Event Center. If we are at Wisheaven, we will be in the ballroom, a larger venue, and will also have a larger screen for presentations and movies. When a location is confirmed, we will make the announcement through various mediums to guarantee that all who have registered for courses are aware of the location.



Classroom Etiquette

Cell phones on vibrate.


No fragrances.

Respect others' rights to hold opinions and beliefs that differ from your own.

Thank your instructor.


Wait to have personal conversations until after the course.

Adhere to all COVID policies and practices, including completion of COVID waiver, if applicable.




ORTHOPAEDIC CARE YOU CAN TRUST

SERVING YOU IN
YORK, HANOVER
& MECHANICSBURG



OSS Health



osshealth.com

OWNED & OPERATED BY OSS HEALTH PHYSICIANS

THANK YOU

OLLI York's enthusiastic volunteer culture is the heartbeat of our organization.

Thank you to everyone who volunteered for OLLI this past year!

| | | | | |
|----------------------|--------------------------|------------------------|------------------------|---------------------|
| Andrea Adams | Sandy Cooley | Paul Hanko | Peter Lutz | Rich Santel |
| Bob Anderson | Diane Delozier | Christine Harrop-Stein | Alice Lynch | Amber Seidel |
| Mary Esther Anderson | Barb Dennis | Di Hershey | Linette Mansberger | Bridget Schell |
| Debbie Ashway | Heidi Deren | Suzy Hershey | Gerry Mansell | Philip Shar |
| Betsy Aulbach | Zach Detwiler | Ronald Hershner | Ray Manus | Joe Simora |
| Tiffany Ayres | Leann Diehl | Chris Hertig | Sheila Martin | Elsie Smith |
| Mary Bach | Rodney Drawbaugh | Cecilia Heydl-Cortinez | Kay McAdams | Marta Smith |
| Barbara Bahn | Robert Driesen | Charles Hoffman | Kathryn McClintock | Stephen Smith |
| Jan Bankert | Boaz Dvir | Linda Hogg | Jim McClure | Shirlee Smolin |
| Patti Baughman | Linda Eckert | Sharon Hopkins | Marian-Joan McFatridge | Karen Snyder |
| Deborah Bauman | Ellen Ehlenbeck | Matt Howie | Pat McGrath | Jack Sommer |
| Bud Beal | Christy Fawcett | Terence Inch | Joan McIntosh | Barry Sparks |
| Peggy Beal | Rob Fawcett | Mindy Inners | Thomas McLaughlin | Trudy Strack |
| Steve Beck | Dan Fichtner | Carolyn Jennerjohn | Andy Miller | Heidi Storey |
| Lila Beedle | Joyce Filius | Roberta Johnson | Nancy Miller | David Sunday |
| Jeffrey Bellomo | Suzanne Flinchbaugh | Jeri Jones | Scott Mingus | Renee Tacka |
| Marc Benton | Greg Foy | Charles Kauffman | Lori Murphy | Jennifer Taylor |
| Bernadette Black | Leigh Foy | Timothy Kauffman | Thomas Murray | Diana Thomas |
| Scott Blanchard | Ivan Frantz | Betsy Keefer | Sherrie Myers | Ben Thompson |
| Sonya Bloom | Kacey French | Linda Kestner | Carol Nechemias | Judith Titus |
| Terry Bluett | Joan Fulton | Rabiya Khan | Brenda Neff | Dora Townsend |
| Mary Boldt | Mikele Garfield Stillman | Dorothy King | Sam Neff | David Van de Streek |
| Mary Jane Branin | Pamela Gay | Laura Koebnick | Bradley Nicholas | Shoba Sivaprasad |
| Brian Broberg | Brandy Gerdes | Carla Kolasa | Randy Parker | Wadhia |
| Ryan Brunsink | Suzanne Geubtner | Nalini Krishnankutty | Chris Paules | Carolyn Warman |
| Kevin Buck | Joy Giguere | Robert Kuhn | Alan Peterson | Curtis Weber |
| Gene Burk | Sukhdeep Gill | Karen Laino Giannuzzi | Jason Plotkin | Ken Weiler |
| Catherine Bush | Sandra Gilleo | Tim Lambert | John Porter | Robin Wible |
| Debbie Butcher | Beth Gill-MacDonald | Trena Landis | Bob Potter | Annie Winter |
| Vince Butera | Don Gogniat | Judy Leece | Donna Pullo | Cheryl Wintermyer |
| Leon Butler | Lawrence Golan | Tyler Lerman | Don Reichard | Spring Younkin |
| Elyse Byrnes | Barry Gordon | Andre Lijoi | Terry Reichard | Zehao Zhou |
| Maureen Campbell | Wanda Gosnell | Roy Livergood Jr. | Don Robinson | Andrew Zydney |
| Sandra Carroll | Lance Grove | June Lloyd | Brian Roche | |
| Sharon Christ | George Haldeman | Pat Loss | Christopher Rodkey | |
| David Christiansen | Kathryn Haldeman | Jim Loyer | Sue Ruby | |
| Peg Chown | Melissa Hanko | Fulgentius Lugemwa | Carig Sansonetti | |

ABOUT OLLI

About OLLI

For adults who never stop experiencing life, there is a place and a community that celebrates learning in a relaxed and accepting environment. We invite you to join us in a learning adventure through the Osher Lifelong Learning Institute at Penn State York (OLLI at Penn State York). OLLI is open to all adults who love to learn.

Founders of The Osher Lifelong Learning Institute (OLLI) at Penn State York

Through the efforts of three like-minded women (clockwise from left, the late Charmaine Kissinger, Olive Padden, and the late Gussie Petron) and several other volunteers, the Osher Lifelong Learning Institute (OLLI) initiated an association with Penn State York. Courses began in April 2008.



What is OLLI at Penn State York?

OLLI at Penn State York was established to enrich the lives of mature adults living in York County by providing a variety of educational and social activities. We are one of more than 124 Osher Lifelong Learning Institutes across the nation that is partially supported by an endowment from the Bernard Osher Foundation. All OLLI's share two principles: (1) that courses should be for the love of learning, no tests, homework, or stress, and (2) that volunteers are the heart of the organization.

How does OLLI at Penn State York work?

OLLI at Penn State York is a membership organization. Members may participate in any of the OLLI activities, which include courses, trips, social activities, and Special Interest Groups (SIGs.) OLLI activities usually take place during the day and are held on the Penn State York campus. *Please note, at the time of catalog design, OLLI at Penn State York is uncertain of our location for fall 2021 courses. When a location is confirmed, we will make the announcement through various mediums to guarantee that all who have registered for courses are aware of the location.

What are the fees for OLLI at Penn State York?

Because OLLI at Penn State York is largely volunteer-driven, the fees are kept low. Membership dues are \$50 per year and are required for many courses. OLLI members' course and event fees vary according to the length in sessions, cost of course materials, and sometimes due to admission tickets. See course descriptions for fee details. Single-session courses are \$8 for members. Nonmembers may take a single-session course for \$20. Bus trips costs range from approximately \$65 to \$110 and are open to members and nonmembers.

What does volunteer-driven mean?

OLLI at York has two full-time staff, a director, and an administrative assistant. OLLI members who volunteer, as well as our volunteer instructors, are the reason OLLI continues to thrive while keeping fees low. OLLI members can choose from a variety of volunteer opportunities. For example, they may instruct a course, serve on a committee, as a course coordinator, or in a leadership position. Participation is flexible, allowing members to contribute as their schedules permit. If you are interested in volunteering with OLLI, see page 30 with volunteer opportunities or call our office, 717-771-4015.

Disclaimers

Individuals acknowledge and assume all risk associated with participation in OLLI activities. OLLI makes no representation regarding the appropriateness of any activity for an individual. OLLI disclaims any and all liability for each individual's participation in said activities. If a program involves physical activity, participants are responsible for wearing the proper attire and using the proper equipment (if applicable.) It is highly recommended that participants consult their physician before participating in physical activity. OLLI disclaims all liability for each individual's participation in any program that involves physical activity. OLLI at Penn State York provides a venue for classes; the content, views and opinions of the instructors are their own and do not necessarily represent the views of OLLI at Penn State York, The Pennsylvania State University, or the OSHER Foundation.

OLLI at Penn State York reserves the right to take photographs or videos during the operation of any program and to use them, whether taken by a representative of OLLI at Penn State York or by other participants, for promotional purposes. By enrolling in an OLLI at Penn State York course or event, participants agree to allow their images to be used in such photography. Participants who prefer that their images not be used are asked to contact the OLLI at Penn State York office at 717-771-4015.



Discover *Real Possibilities* in York

AARP in York is creating real, meaningful change. We're proud to help all our communities become the best they can be. Like providing family caregivers with tips to take care of loved ones, helping to make our communities more livable and and virtually hosting fun, informative events.

AARP is here to help you take on today—and everyday with *Real Possibilities*.

Get to know us at www.aarp.org/york.



Real Possibilities is a trademark of AARP.

OLLI COURSE DESCRIPTIONS

FALL 2021

MONDAY COURSES

MOGULS AND MOVIE STARS:

THE HISTORY OF HOLLYWOOD - ALL FOUR SESSIONS

Turner Classic Movies (TCM) documentary series about the history of Hollywood, *Moguls and Movie Stars: A History of Hollywood*, is an engrossing series that will delight not only movie buffs, but also those interested in how the film business began, and how it has evolved.

Date: Mondays, September 13, 20, 27, and October 4

Time: 11:00 a.m.-12:30 p.m.

Fee: \$30 members/\$80 nonmembers

Instructor: Rich Santel

MOGULS AND MOVIE STARS:

1. PEEPSHOW PIONEERS (1889-1910)

Turner Classic Movies (TCM) documentary series about the history of Hollywood, *Moguls and Movie Stars: A History of Hollywood*, is an engrossing series that will delight not only movie buffs, but also those interested in how the film business began, and how it has evolved. In episode 1, *Peepshow Pioneers* (1889-1910), the series begins with a look at film in its infancy, taking a look at people such as Thomas Edison, Auguste and Louis Lumière, and Georges Méliès. Also covered is the role of the newly arriving immigrants in America and their role in shaping the history of cinema, particularly in starting some of the earliest nickelodeons for people to view movies.

Date: Monday, September 13

Time: 11:00 a.m.-12:30 p.m.

Fee: \$8 members/\$20 nonmembers

Instructor: Rich Santel

HISTORY OF MAPMAKING (CARTOGRAPHY) CONTINUED (SESSION 1): HOW WERE MAPS ACTUALLY MADE IN PREHISTORIC AND MEDIEVAL TIMES

A previous class on the history of mapmaking, or cartography as it is known, sparked an interest in learning more about how maps were actually created and by whom during various historic time periods. This class is the first in a series of classes intended to provide this information in much greater detail than the original class was intended to do. This class will begin in prehistoric times when the earliest "maps" known to man were created up to and including medieval times.

Date: Monday, September 13

Time: 1:00-2:30 p.m.

Fee: \$8 members/\$20 nonmembers

Instructor: Steve Beck

MOGULS AND MOVIE STARS:

2. THE BIRTH OF HOLLYWOOD (1907-20)

Turner Classic Movies (TCM) documentary series about the history of Hollywood, *Moguls and Movie Stars: A History of Hollywood*, is an engrossing, wonderfully made series that will delight not only movie buffs, but also those interested in how the film business began, and how it has evolved. In episode 2, *The Birth of Hollywood* (1907-20), most early American movies were filmed in and around large cities, such as New York and Chicago. These locations proved problematic for a lack of variety in shooting locations and for legal reasons. To solve their problems, many key players in the industry began to migrate west to California, establishing Hollywood as a movie maker paradise in the 1910's. Included in this episode are legends such as Charlie Chaplin, Samuel Goldwyn, Cecil B. DeMille, D.W. Griffith, Mary Pickford, and Lillian Gish.

Date: Monday, September 20

Time: 11:00 a.m.-12:30 p.m.

Fee: \$8 members/\$20 nonmembers

Instructor: Rich Santel

MOGULS AND MOVIE STARS:

3. THE DREAM MERCHANTS (1920-29)

Turner Classic Movies (TCM) documentary series about the history of Hollywood, *Moguls and Movie Stars: A History of Hollywood*, is an engrossing, wonderfully made series that will delight not only movie buffs, but also those interested in how the film business began, and how it has evolved. In episode 3, *The Dream Merchants* (1920-28), the 1920s proved to be the decade that brought us true Hollywood moguls. Many of the previously mentioned immigrants had accumulated vast amounts of wealth in their Nickelodeons, prompting them to produce their own films. Upon moving to Hollywood, many of them founded their own production studios which lead to the creation of many of the companies we still know today. Included are Louis B. Mayer (MGM), Adolph Zukor (Paramount), Carl Laemmle (Universal), and all four of the Warner brothers.

Date: Monday, September 27

Time: 11:00 a.m.-12:30 p.m.

Fee: \$8 members/\$20 nonmembers

Instructor: Rich Santel

**OFFICE
HOURS**

At the time of catalog production, we are unsure of our OLLI office hours for fall. We will share our office hours via our weekly e-newsletter as soon as those hours are confirmed.

A BRIEF HISTORY OF JAZZ

A Brief History of Jazz is an overview of the historic unfolding of the musical style of American Jazz. We will look at what elements helped to bring the style into existence, what the characteristics, significant composers, and performers were, how it evolved over decades, and the important turning points in the timeline of musical history.

Date: Mondays, September 27 and October 4

Time: 1:00-2:30 p.m.

Fee: \$16 members/\$40 nonmembers

Instructor: Curtis Nelson

MOGULS AND MOVIE STARS:

4. BROTHER CAN YOU SPARE A DREAM (1929-41)

Turner Classic Movies (TCM) documentary series about the history of Hollywood, *Moguls and Movie Stars: A History of Hollywood*, is an engrossing, wonderfully made series that will delight not only movie buffs, but also those interested in how the film business began, and how it has evolved. In episode 4, *Brother Can You Spare a Dream (1929-41)*, the film industry faced some major changes and hardships, such as the introduction of "talkies" and the Great Depression. This period also marked the arrival of many European filmmakers to Hollywood (Billy Wilder, Alfred Hitchcock, and William Wyler to name a few), bringing with them unique styles and perspectives which would change movies forever.

Date: Monday, October 4

Time: 11:00 a.m.-12:30 p.m.

Fee: \$8 members/\$20 nonmembers

Instructor: Rich Santel

EXERCISE IS MEDICINE!

Did you know that exercise helps cut risk of breast, prostate, and colon cancer? Exercise also lowers risk of depression and anxiety as well as helping to treat those illnesses if you develop them? It improves hypertension, diabetes, and cardiac disease? This course gives practical tips on the benefits of exercise in maintaining health as well as how to motivate ourselves to continue with it as we age. It also tells you how to safely undertake an exercise routine.

Date: Monday, October 4

Time: 3:00-4:30 p.m.

Fee: \$8 members/\$20 nonmembers

Instructor: Dr. Robert Fawcett



Follow OLLI at Penn State York
on Facebook!

A PHOTOGRAPHIC TOUR OF EGYPT'S TEMPLES ON THE NILE

Egypt's 3,000-year-old culture is still visible in the remains of numerous temples along the Nile River and Lake Nasser. We will visit a number of these sites. Egypt is much more than three pyramids! Anderson took a Nile River cruise a few years ago and will share his pictures with you.

Date: Monday, October 11

Time: 11:00 a.m.-12:30 p.m.

Fee: \$8 members/\$20 nonmembers

Instructor: Reverend Robert Anderson

CREATING AND PUBLISHING WEB MAPS

With the proliferation of free and easy-to-use digital map creation apps available through the internet, the creation of web maps is rapidly becoming a fun and affordable hobby. This course will teach the fundamentals of creating interesting and informative web maps using apps such as Google maps and ArcGIS Online.

Date: Monday, October 11

Time: 1:00-2:30 p.m.

Fee: \$8 members/\$20 nonmembers

Instructor: Steve Beck

E.C. COMICS, THE CONTROVERSIAL PUBLISHERS THAT WERE SAID TO HAVE CORRUPTED CHILDREN IN THE 1950s

This class will concentrate on some of the most controversial comics of all time. E.C. Comics dominated the first half of the 1950s with popular titles such as *Tales from the Crypt*, *Weird Science*, and *Frontline Combat*. These comics pushed the limits as to what was considered appropriate reading material for young eyes with their haunting tales of blood and gore. Yet, at the same time, they explored deeply relevant topics and social taboos that were considered ground breaking in their day.

Date: Monday, October 11

Time: 3:00-4:30 p.m.

Fee: \$8 members/\$20 nonmembers

Instructor: Hillary Nelson

FALL PREVENTION AND YORK COUNTY AREA AGENCY ON AGENCY SERVICES

For older adults, maintaining their independence is important. Falls are a leading cause of death for older adults 65+, and they are the biggest reason why older adults lose their independence. Falls are preventable, and it's important to understand what increases your fall risk. Complete a Fall Risk Assessment to determine your fall risk and learn how to prevent a fall. If something should happen, York County Area Agency On Aging may have services to help you — come learn about what's available.

Date: Monday, October 18

Time: 9:00-10:30 a.m.

Fee: \$8 members/\$20 nonmembers

Instructor: Megan Craley



OLLI is excited to share that we have a new, and much improved website! After July 22, Go to olli.psu.edu/york and explore the new site. To acclimate

our members to the new website, we will hold three sessions, "Navigating OLLI York's New Website." The sessions are free, but registration is mandatory.

Monday, August 9, 1:00-2:00 p.m. at Wisehaven, [Register](#)

Tuesday, August 10, 2:00-3:00 p.m. via Zoom, [Register](#)

Thursday, August 12, 9:00-10:00 a.m. via Zoom, [Register](#)

HOLLYWOOD CLASSICS II - ALL SIX MOVIES

Join Rich Santel as he presents the following movies: *The Old Maid* (1939); *Mr. Blandings Builds His Dream House* (1948); *Niagara* (1953); *Born to Kill* (1947); *Safety Last* (1923); *It Happened on Fifth Avenue* (1947). All but *The Old Maid* have Closed Captioning (CC.)

Date: Mondays, October 18, 25, November 1, 8, 15, and 22

Time: 3:00-5:30 p.m.

Fee: \$45 members/\$120 nonmembers

Instructor: Rich Santel

HOLLYWOOD CLASSICS II - THE OLD MAID (1939) NO CC

The arrival of an ex-lover on a young woman's wedding day sets in motion a chain of events which will alter her, and her cousin's lives forever. This drama stars Bette Davis.

Date: Monday, October 18

Time: 3:00-5:30 p.m.

Fee: \$8 members/\$20 nonmembers

Instructor: Rich Santel

FORDS AND FERRIES: HOW THE SUSQUEHANNA RIVER PLAYED A ROLE IN THE AMERICAN REVOLUTION

The Susquehanna River played a big part – an unsung big part – in the Continental Congress' stay in York County that covered all or part of four seasons in 1777-78. The Susquehanna provided a hurdle against sneak British attacks on the Continental Congress. Yet even with this mile-wide buffer, Congress lived with a constant threat of capture and then hanging for treason. So, they surveyed the Susquehanna to see where British raiders might splash across. No such raid was mounted, and the statesmen, moving by ferry back across the Susquehanna, returned to Philadelphia in the summer of 1778.

Date: Monday, October 25

Time: 11:00 a.m.-12:30 p.m.

Fee: \$8 members/\$20 nonmembers

Instructor: Jim McClure

LIFE BEYOND DEATH - A WORLD-WIDE RELIGIOUS PERSPECTIVE

Is there some aspect of ourselves that remains after our physical death? This is a crucial question for anyone who has lost a dearly loved one to death. We will explore at least the five major religions' beliefs. Come with an open mind and questions... skeptics are welcome. There will be time for open discussion and personal experiences if you would like to share. There is no need to feel embarrassed if you get emotional - there is no topic we humans care more about. The hope is that all will find a measure of hope and comfort from what you learn. Lecture followed by questions and discussion.

Date: Mondays, October 25 and November 1

Time: 1:00-2:30 p.m.

Fee: \$16 members/\$40 nonmembers

Instructor: Marc Benton

HOLLYWOOD CLASSICS II - MR. BLANDINGS BUILDS HIS DREAM HOUSE (1948) CC

Cary Grant and Myrna Loy star in this classic screwball comedy about a big city executive who wants to find a simpler life in the country.

Date: Monday, October 25

Time: 3:00-5:30 p.m.

Fee: \$8 members/\$20 nonmembers

Instructor: Rich Santel

THADDEUS STEVENS: THE GREATEST UNKNOWN PERSON IN AMERICAN HISTORY

Ross Hetrick will impersonate Thaddeus Stevens and tell about his life and achievements and answer questions about this remarkable man.

Date: Monday, November 1

Time: 11:00 a.m.-12:30 p.m.

Fee: \$8 members/\$20 nonmembers

Instructor: Ross Hetrick

HOLLYWOOD CLASSICS II - NIAGARA (1953) CC

As two couples are visiting Niagara Falls, tensions between one wife and her husband reach the level of murder. This film-noir thriller stars Marilyn Monroe and Joseph Cotton.

Date: Monday, November 1

Time: 3:00-5:30 p.m.

Fee: \$8 members/\$20 nonmembers

Instructor: Rich Santel



Humans created this catalog. There will be errors.

PEARL HARBOR: WHAT DID FDR KNOW BEFORE THE ATTACK? (REPEAT)

Why did the Japanese attack Pearl Harbor? What blunders occurred that allowed the attack to be such a surprise? What military mistakes did the Japanese make the day of the attack? Did the federal government know that Pearl Harbor was going to be attacked? How did the attack affect the conscious of America? How did the military and federal government respond politically to the attack?

Date: Monday, November 8

Time: 9:00-10:30 a.m.

Fee: \$8 members/\$20 nonmembers

Instructor: William "Bud" Beal

LIFE BEYOND DEATH - NEAR DEATH AND REINCARNATION FROM A SCIENTIFIC PERSPECTIVE

Recent studies in near-death experiences, involving physicians and scientists, and well-documented and reliable studies of reincarnation, raise the possibility many-fold. Documentary videos and striking reports bring this reality to life. Come with an open mind and questions...skeptics are welcome. There will be time for open discussion and personal experiences if you would like to share. There is no need to feel embarrassed if you get emotional – there is no topic we humans care more about. The hope is that all will find a measure of hope and comfort from what you learn. Lecture followed by questions and discussion.

Date: Mondays, November 8 and 15

Time: 1:00-2:30 p.m.

Fee: \$16 members/\$40 nonmembers

Instructor: Marc Benton

HOLLYWOOD CLASSICS II - BORN TO KILL (1947) CC

Helen Brent (Claire Trevor) knows Sam Wild (Lawrence Tierney) is more than a social climber who married her wealthy foster sister. He is a remorseless killer.

Date: Monday, November 8

Time: 3:00-5:30 p.m.

Fee: \$8 members/\$20 nonmembers

Instructor: Rich Santel

REAL ESTATE - READY TO MAKE A CHANGE? DO YOU REMODEL, DOWNSIZE, OR SELL OUTRIGHT?

Is it time for a lifestyle change? We'll have an open discussion that will hopefully help you make an informed decision about your future homeownership. We'll discuss changes needed and costs incurred to stay in your current home, selling and downsizing to a smaller home, or selling outright and moving into a rental situation.

Date: Monday, November 15

Time: 9:00-10:30 a.m.

Fee: \$8 members/\$20 nonmembers

Instructor: Katie Horne

HOLLYWOOD CLASSICS II - SAFETY LAST! (1923) CC

A boy (Harold Lloyd) moves to New York City to make enough money to support his loving girlfriend (Mildred Davis), but soon discovers that making it in the big city is harder than it looks. (This action comedy was originally shown at OLLI in Spring 2014.)

Date: Monday, November 15

Time: 3:00-5:30 p.m.

Fee: \$8 members/\$20 nonmembers

Instructor: Rich Santel

PRESIDENT CALVIN COOLIDGE: HIS LIFE AND TIMES (REPEAT)

Robert Anderson grew up in Vermont and lived about forty miles from where Calvin Coolidge was born and grew up. Stories about Coolidge were frequently told. Anderson has been interested in Coolidge's life and career his whole life. For being known as "silent Cal," there are plenty of stories about him, many humorous. We'll review the highs and lows of his life and political career that catapulted him to president in 1923. (This class was originally offered in fall 2016.)

Date: Monday, November 22

Time: 1:00-2:30 p.m.

Fee: \$8 members/\$20 nonmembers

Instructor: Reverend Robert Anderson

HOLLYWOOD CLASSICS II - IT HAPPENED ON FIFTH AVENUE (1947) CC

Two drifters occupy a Fifth Avenue mansion while its owners are wintering in the South. This romantic comedy stars Victor Moore, Don DeFore, Charlie Ruggles and Gale Storm.

Date: Monday, November 22

Time: 3:00-5:30 p.m.

Fee: \$8 members/\$20 nonmembers

Instructor: Rich Santel



Course registration

Registering Amid COVID

**Registering online on
August 17 is the most
effective way to ensure
that you get the courses**

you want. However, if you choose to mail your Course Registration Form to University Park (UP), you can mail the form as soon as you make your course selections. UP will keep the forms, in the order they were received, and submit your registration on August 17 if you are an OLLI member, August 31 if you are a nonmember.

TUESDAY COURSES

GIVING SMART PEOPLE AN AUDIENCE AND A MICROPHONE

Hear about some of downtown York's most dynamic community gatherings that feature stories from some of the usual suspects and also the unsung heroes. Get a behind-the-scenes look at how and why these arts and humanities programs began, and how you can participate.

Date: Tuesday, September 7

Time: 9:00-10:30 a.m.

Fee: \$8 members/\$20 nonmembers

Instructor: JJ Sheffer

A TRANSGENDER CHILD: A PARENT'S EXPERIENCE (REPEAT)

Transgender people are in the news more and more, yet seldom do you know anyone close enough to a transgender person to learn the inside story and have the opportunity to ask any question you want. This course will share Bob Anderson's experience raising his transgender child, how the transition happened and what problems they have encountered, and what solutions he and his child discovered. (This class was originally offered in fall 2016.)

Date: Tuesday, September 7

Time: 11:00 a.m.-12:30 p.m.

Fee: \$8 members/\$20 nonmembers

Instructor: Reverend Robert Anderson

HOLLYWOOD CLASSICS I - ALL SIX MOVIES

The Last Hurrah (1958); *I'll Cry Tomorrow* (1955); *High Society* (1956); *The Ghost and Mrs. Muir* (1947); *Our Vines Have Tender Grapes* (1945); *Waterloo Bridge* (1940). All movies except *Our Vines Have Tender Grapes* have CC.

Date: Tuesdays, September 7, 14, 21, 28, October 5, and 12

Time: 3:00-5:30 p.m.

Fee: \$45 members/\$120 nonmembers

Instructor: Rich Santel

HOLLYWOOD CLASSICS I - THE LAST HURRAH (1958) CC

This dramatic comedy was directed by John Ford and stars Spencer Tracy as a veteran mayor preparing for yet another election campaign.

Date: Tuesday, September 7

Time: 3:00-5:30 p.m.

Fee: \$8 members/\$20 nonmembers

Instructor: Rich Santel

A VISUAL IS WORTH A THOUSAND WORDS...

Logos, brands, flags, symbols, signs - graphic design permeates every aspect of our visual world, from the smallest stamp to gigantic billboards, and beyond. In this course, we will trace the evolution of visual communication from prehistoric cave painting to present-day internet banners, looking at both good and bad examples along the way to discover what makes an effective design.

Date: Tuesdays, September 14, 21, and 28

Time: 9:00-10:30 a.m.

Fee: \$24 members/\$60 nonmembers

Instructor: Ellen Engdahl Ehlenbeck

BROADWAY'S GOLDEN AGE (REPEAT)

Revisit some of the greatest Broadway songs of the golden age as Debbie Butcher performs some of her favorites, and shares information about the shows they came from, including composers, notable performers, and little-known anecdotes. Take a stroll down memory lane while singing along and reliving some of your own Broadway memories. (This class was originally offered in fall 2017.)

Date: Tuesday, September 14

Time: 11:00 a.m.-12:30 p.m.

Fee: \$8 members/\$20 nonmembers

Instructor: Debbie Butcher

FALL BOOK CLUB - THE FOUR WINDS BY KRISTIN HANNAH

Elsa Wolcott is a woman trying to raise two children on a farm in the Great Plains during the Dust Bowl following the Great Depression. She watches as the lands around her crack in their perpetually parched state and the hopelessness threatens to break the spirit of those around her.

Date: Tuesday, September 14

Time: 1:00-2:30 p.m.

Fee: \$8 members/\$20 nonmembers

Instructor: Pat McGrath

HOLLYWOOD CLASSICS I - I'LL CRY TOMORROW (1955) CC

This film starring Susan Hayward is a biopic that tells the story of Lillian Roth, a Broadway star who rebels against the pressure of her domineering mother and struggles with alcoholism.

Date: Tuesday, September 14

Time: 3:00-5:30 p.m.

Fee: \$8 members/\$20 nonmembers

Instructor: Rich Santel

MY RIGHT KNEE (REPEAT)

Dr. Butera will review his thirty-year experience of treating knee arthritis and performing total knee replacement. He will also share his own personal experience of having a total knee replacement.

Date: Tuesday, September 21

Time: 11:00 a.m.-12:30 p.m.

Fee: \$8 members/\$20 nonmembers

Instructor: Vince Butera

LEARN THE BASICS OF HOME-BREWING

The appeal of craft beer has prompted many to want to learn how to brew beer at home. In this course, you will learn all steps in the brewing process. Although we won't actually brew a beer that day, the ingredients you will taste and smell (grains and hops) will be used to brew the following weekend. (This class was originally offered in fall 2020.)

Date: Tuesday, September 21

Time: 1:00-2:30 p.m.

Fee: \$8 members/\$20 nonmembers

Instructor: Mark Casteel

HOLLYWOOD CLASSICS I - *HIGH SOCIETY* (1956) CC

This musical remake of *The Philadelphia Story* was directed by Charles Walters and stars Bing Crosby, Grace Kelly, and Frank Sinatra.

Date: Tuesday, September 21

Time: 3:00-5:30 p.m.

Fee: \$8 members/\$20 nonmembers

Instructor: Rich Santel

GETTING YOUR MONEY'S WORTH

Are you a savvy shopper? Do you understand Pennsylvania's confusing and irrational sales tax applications? Have you ever been ripped off by a store overcharging you using their scanning technology? What did you do about it? Do you fall for a store's marketing gimmicks? Your shopping trips will never be the same after this entertaining and educational presentation designed to make you a smarter consumer and help stretch your shopping dollars.

Date: Wednesday, October 20 **NEW DATE**

Time: 11:00 a.m.-12:30 p.m.

Fee: \$8 members/\$20 nonmembers

Instructor: Mary Bach



Proud to Support
OLLI at Penn State York



717.757.4633

www.CollensWagner.com

WE LISTEN. WE ADVISE. WE PROTECT.



MEMBERSHIP ASSISTANCE AVAILABLE

Sometimes life happens, and it can cost more than we expected. If your budget is feeling a pinch, and that's keeping you from registering for a course or event, we can help. The generosity of some of our members has made it possible for us to provide assistance. The process is easy. Just tell the director that you'd like to use some membership assistance money. We don't ask for proof of need and we won't ask any questions.

Just ask, we want to see you at OLLI!

HEALTH CARE UPDATE 2021

Learn about the latest health care developments. How will these changes affect hospitals, doctors, and patients in and around South Central Pennsylvania?

Date: Tuesday, September 28

Time: 1:00-2:30 p.m.

Fee: \$8 members/\$20 nonmembers

Instructor: John M. Porter, Jr.

HOLLYWOOD CLASSICS I - *THE GHOST AND MRS. MUIR*

(1947) CC

This romantic-fantasy starring Gene Tierney and Rex Harrison is based on a 1945 novel written by Josephine Leslie.

Date: Tuesday, September 28

Time: 3:00-5:30 p.m.

Fee: \$8 members/\$20 nonmembers

Instructor: Rich Santel

MY SIX FAVORITE LOCAL GEOLOGY POWERPOINTS

Jeri Jones will select his six favorite PowerPoint programs dealing with York County and Pennsylvania geology. Over the duration of the course, you will hear about earthquakes, geologic history, fossils, minerals, the Susquehanna River, meteorites, and neat locations to visit. Handouts will be distributed weekly.

Date: Tuesdays, October 5, 12, and 19

Time: 11:00 a.m.-12:30 p.m.

Fee: \$24 members/\$60 nonmembers

Instructor: Jeri Jones

MODERN IRISH LITERATURE, IN ENGLISH AND IRISH GAELIC

Ireland has enjoyed a rich literary tradition, both in English and native Irish languages. Modern Irish writing has given the world commentary on time, place, and tradition. This course will highlight Irish writers from the twentieth century and their contributions to Irish literature. Writers covered include: Padraig Pearse, Liam Gogan, James Joyce, W.B. Yeats, J.M. Synge, and Samuel Beckett.

Date: Tuesdays, October 5 and 12

Time: 1:00-2:30 p.m.

Fee: \$16 members/\$40 nonmembers

Instructor: Elyse Byrnes

**WILL BE
RESCHEDULED
AS A POP-UP
COURSE**

HOLLYWOOD CLASSICS I - *OUR VINES HAVE TENDER GRAPES* (1945) NO CC

This drama starring Edward G. Robinson and Margaret O'Brien, tells the story of a Wisconsin farming family as it takes on the struggles and rewards of rural life.

Date: Tuesday, October 5

Time: 3:00-5:30 p.m.

Fee: \$8 members/\$20 nonmembers

Instructor: Rich Santel

HOLLYWOOD CLASSICS I - *WATERLOO BRIDGE* (1940) CC

Vivien Leigh and Robert Taylor star in this drama about a young ballerina who, believing her fiancé to be dead, turns to prostitution to survive. (This movie was originally shown at OLLI in winter 2014)

Date: Tuesday, October 12

Time: 3:00-5:30 p.m.

Fee: \$8 members/\$20 nonmembers

Instructor: Rich Santel

FALL BOOK CLUB - *THE EXTRAORDINARY LIFE OF SAM HELL* BY ROBERT DUGONI

Sam Hell is an inspiring tale about a boy born with ocular albinism, which makes his eyes appear red. His mother enrolls him in a Catholic school, where he quickly earns the nickname "Devil Boy." Sam faces bullies of all sizes and ages and stands up to them with remarkable strength throughout his adult life.

Date: Tuesday, October 19

Time: 1:00-2:30 p.m.

Fee: \$8 members/\$20 nonmembers

Instructor: Pat McGrath

THE HOLOCAUST (REPEAT)

This is a course that should not exist. The Holocaust, that horrific event which ended in 1945, is a historical topic which has impacted our society in a myriad of ways. Explore the details, little known facts and big picture items that encompassed this time period in history. Beware, this is hard history and class topics will be distressing at times. If you love history, want to know more about this topic, or are just curious, this is the course for you. (This class was originally offered in 2008.)

Date: Tuesdays, October 19, 26, November 2, 9, 16, and 23

Time: 3:30-5:00 p.m.

Fee: \$48 members/\$120 nonmembers

Instructor: Molly Dallmeyer

LINCOLN AND "THE BOYS" (REPEAT)

Pastor Curt will be showing a PowerPoint presentation dealing with President Abraham Lincoln's relationship with his "Boys" – personal secretary, John Nicolay, and assistant secretary, John Hay. They enjoyed more access, witnessed more history, and knew Lincoln better than anyone else outside the president's immediate family. They were present at every important event. Still young men in their twenties, they lived and worked in the White House, performing the roles and functions of many.

Date: Tuesday, October 26

Time: 9:00-10:30 a.m.

Fee: \$8 members/\$20 nonmembers

Instructor: Reverend Curt Weber

GERMAN LANGUAGE AND CULTURE

The sounds of oom-pah and Viennese music, the clinking of beer mugs, the smells of roasted nuts and spiced wine at the Christmas markets, and the voices of children's choirs conjure up the rich cultural traditions in Germany, Austria, and Switzerland. Join us as we explore the influence of the Romans and Germanic tribes in forging German-based languages more than 2,000 years. Learn about the many customs celebrated during everyday life and holidays that showcase foods, drinks, music, dance, folk costumes, religion, and more. From the lowlands in the north to the Alps in the south, the region of Central Europe where German is spoken holds many wonders for all to enjoy. Hoffentlich sehen wir uns! Hope to see you!

Date: Tuesday, October 26

Time: 11:00 a.m.-12:30 p.m.

Fee: \$8 members/\$20 nonmembers

Instructor: Charles "Chip" Kauffman

LET'S GO! VIRTUAL MUSEUM TOURS OF MODERN ART

The world is full of great art museums, but it's not always easy to visit them in person. Don't let that stop you from experiencing great modern art — this is the next best thing. Take a virtual guided tour of favorite pieces and places for modern and contemporary art, all from the comfort of your OLLI armchair. Bon Voyage!

Date: Tuesdays, November 2, 9, 16, and 23

Time: 9:00-10:30 a.m.

Fee: \$32 members/\$80 nonmembers

Instructor: Ellen Engdahl Ehlenbeck

EXPLORING OUR FABULOUS WILD EAST! ADVENTURES ON THE APPALACHIAN TRAIL AND SUSQUEHANNA RIVER

Bill Minarik shares adventures of backpacking the Appalachian Trail's 2,190.9 miles and kayaking all 444 miles of the Susquehanna River. Dangerous snow and hail storms, wild boars, amazing wildlife, and mountain flora accompanied Minarik for 166 days through fourteen states from Georgia to Maine on America's most famous footpath. Plus kayak the East Coast's longest and oldest river as the Susquehanna meanders from New York to the Chesapeake Bay in a kayaker's paradise.

Date: Tuesday, November 2

Time: 11:00 a.m.-12:30 p.m.

Fee: \$8 members/\$20 nonmembers

Instructor: Bill Minarik

A PHOTOGRAPHIC TOUR OF DUBAI, UNITED ARAB EMIRATES

The city of Dubai started out as a small fishing village at the mouth of a river. Now it is an architectural wonderland, and includes the Burj Khalifa, the tallest building in the world. Come see it all and be dazzled! Reverend Anderson has visited Dubai six times, and will share his pictures of the city with you.

Date: Tuesday, November 9

Time: 11:00 a.m.-12:30 p.m.

Fee: \$8 members/\$20 nonmembers

Instructor: Reverend Robert Anderson

IMPOSTER SCAMS: WHO'S THAT CALLING OR SENDING THAT EMAIL

Imposter scams are touching the lives of most of us via our telephones, computers, and tablets. People impersonating government officials or even our relatives are trying to steal our money or our identities. Do you know what is a real or a valid request versus a misrepresentation or an outright lie? Once a thief has your information, it can be used to commit fraud. When your money is gone, it's gone! This educational program is packed with tips and resources to help you protect yourself, your good name, and your money.

Date: Tuesday, November 16

Time: 11:00 a.m.-12:30 p.m.

Fee: \$8 members/\$20 nonmembers

Instructor: Mary Bach

FALL BOOK CLUB - THE TROUBLE WITH GOATS AND SHEEP BY JOANN CANNON

Part coming-of-age story, part mystery, this book is a quirky and utterly charming debut about a community in need of absolution and two girls learning what it means to belong.

Date: Tuesday, November 16

Time: 1:00-2:30 p.m.

Fee: \$8 members/\$20 nonmembers

Instructor: Pat McGrath



Inclement Weather

It is your responsibility to check the following if there is inclement weather:

- Our website, olli.psu.edu/york
- OLLI at Penn State York's Facebook page, @OLLIPennStateYork
- In the event of a two-hour delay, an email will be sent to all 11:00 a.m. course registrants informing them if the instructor is holding the course. A post will also be made on Facebook. If you don't have email, the OLLI office will call you.

WEDNESDAY COURSES

NATURE PHOTOGRAPHY

Capturing the magic of nature through photography has been a passion for many since the art form was invented. With the invention of digital photography, that hobby is now at everyone's fingertips. We'll look at several ways to use digital photography (including DSLR and mirrorless cameras, as well as phone cameras) to capture the beauty of the outdoors and offer some tips on how to improve your nature photography.

Date: Wednesdays, September 8, 15, 22, and 29

Time: 9:00-10:30 a.m.

Fee: \$32 members/\$80 nonmembers

Instructor: Barry Rauhauser

HOMELAND SECURITY THROUGHOUT AMERICA'S HISTORY

Homeland Security was a key concern during the American Revolution, War of 1812, Mexican War, Civil War, WWI, and WWII. This presentation reviews how adversaries (foreign and domestic), intelligence, natural disasters, and epidemics/pandemics were addressed during these periods. The only thing new is the history we haven't learned.

Date: Wednesday, September 8

Time: 11:00 a.m.-12:30 p.m.

Fee: \$8 members/\$20 nonmembers

Instructor: Chris Hertig

HOW YOU SEE YOU AFFECTS EVERYTHING

How we see ourselves is a big part of how we see everything else. How would you describe yourself? Who is the "I" in you? How does the self develop? How does yourself fit into your personality - in some people, there is a good fit...in others there is no fit at all. If you are not happy with yourself, can you change? How? What are the barriers? How can you survive catastrophic changes in how you see yourself? How we see ourselves affects every single part of our lives. Come ready to take a good look at yourself (revealing what you see is purely optional). This course can be a real life-changer for anyone who is willing to see how you see yourself.

Date: Wednesdays, September 8 and 15

Time: 1:00-2:30 p.m.

Fee: \$16 members/\$40 nonmembers

Instructor: Marc Benton

THE BATTLESHIP: THE END OF AN ERA 1861-1945

Ken Weiler will discuss the sea change that occurred in surface naval warfare from 1861 to 1945 concentrating on the capital ships of the world's major navies. Starting with the first operational ironclad, the U.S. S. Monitor, Weiler will trace the development of battleships of the major navies to the conclusion of the Second World War in 1945 and what replaced them.

Date: Wednesdays, September 15, 22, and 29

Time: 3:00-4:30 p.m.

Fee: \$24 members/\$60 nonmembers

Instructor: Ken Weiler

THE BOROUGHES OF YORK COUNTY, PENNSYLVANIA

Are you familiar with Franklintown, Yorkana, and New Salem boroughs? Class members will go on a whirlwind tour via PowerPoint of the boroughs of York County. We'll visit all thirty-six boroughs — and a sampling of unincorporated villages in our thirty-five townships — talking about what put them on the map and what they're known for today. This survey is designed to whet your appetite to visit these sometimes obscure but always interesting towns that help make York County, York County.

Date: Wednesday, September 22

Time: 11:00 a.m.-12:30 p.m.

Fee: \$8 members/\$20 nonmembers

Instructor: Jim McClure

MY COMMUNIST HOUSE GUEST

In 1988 I lived in Madison, Wisconsin, which was a sister city to Vilnius, Lithuania. A group of visitors arrived for a ten-day stay in Madison. Helena Kolbitzkyata was my house guest for ten days. She taught in a high school and I was given an itinerary of her interests. Her opinions, judgments, and needs were revealing and chilling. At least she expressed these feelings in perfect English and with total bluntness. The experience was unforgettable for both of us.

Date: Wednesday, September 29

Time: 1:00-2:30 p.m.

Fee: \$8 members/\$20 nonmembers

Instructor: Mikele Stillman

LOCATION, LOCATION, LOCATION

At the time of catalog design, OLLI at Penn State York is uncertain of our location for fall 2021 courses. We will either be back on the Penn State York campus or at Wisehaven Event Center. If we are at Wisehaven, we will be in the ballroom, a larger venue, and will also have a larger screen for presentations and movies. When a location is confirmed, we will make the announcement through various mediums to guarantee that all who have registered for courses are aware of the location.



Life gets better.®

Lifelong learning is important to you.



And us. At Country Meadows, we offer programs to engage the mind, body and spirit of our residents in all levels of care. From art classes, cooking demonstrations and yoga on the patio to presentations by visiting professors and trips to local museums, our residents expand their interests and learn new skills. Our Dynamic Living team is dedicated to getting to know each of our residents and plans activities and events around what they enjoy, both on and off campus. Every day is another opportunity to learn—at every age. Just ask our residents!

Contact us today to learn more about our vibrant lifestyle options or schedule a tour to see for yourself.

CountryMeadows.com

2760 Pine Grove Road, York • 717-741-5118
1920 Trolley Road, York • 717-764-1190



Independent Living | Personal Care | Memory Care | Restorative Care

INVESTING 101: STOCKS, BONDS, AND MUTUAL FUNDS

What can you anticipate from financial markets in a post COVID-19 environment? Learn about basic investment principles, types of investments, inflation, and ideas to consider for your own investment portfolio.

Date: Wednesdays, October 6 and 13

Time: 9:00-10:30 a.m.

Fee: \$16 members/\$40 nonmembers

Instructor: Tyler Lerman

SLAVE HUNTERS: A PRELIMINARY EXAMINATION OF A CRUCIAL-YET UNKNOWN-PIECE OF AFRICAN-AMERICAN HISTORY

While there are books on individuals who captured freedom seekers for rewards, there is little to no study of the practice overall. Understanding the methods and economic drivers for slave hunting is essential for a full understanding of the Underground Railroad and slavery itself.

Date: Wednesday, October 6

Time: 11:00 a.m.-12:30 p.m.

Fee: \$8 members/\$20 nonmembers

Instructor: Chris Hertig

THE CHALLENGE OF LETTING GO: FINDING BALANCE AND STRENGTH AS A LOVED ONE DECLINES

The issues of change curve, expectations, changing roles, how to deal with burnout, the crucial role of community support, the need to deal with feelings, the importance of vulnerability, and the timetable for healing will be discussed. Also included are the importance of sacred space, spiritual resource, and creating plans, low goals, small steps. The presentation leaves room for interaction with participants as they invariably enrich the experience for everyone

Date: Wednesday, October 13

Time: 1:00-2:30 p.m.

Fee: \$8 members/\$20 nonmembers

Instructor: Judith Bowen

IMMUNIZATIONS: WHICH ONES YOU NEED AND WHY YOU STILL NEED THEM (FORMERLY VACCINATIONS)

This course will briefly discuss the history of immunizations, the way they work, and our ongoing development of new ones to protect us as we age. We will discuss scientifically-based recommendations for them with special emphasis on which ones are necessary for seniors and why. Note: failure to sign up for this program could be injurious to your health.

Date: Wednesday, October 20

Time: 9:00-10:30 a.m.

Fee: \$8 members/\$20 nonmembers

Instructor: Rob Fawcett

WILLIAM GOODRIDGE: REENACTED

Kelly Summerford will visit us as William Goodridge, a black entrepreneur in York during the Civil War era who played a large part with the underground railroad.

Date: Wednesday, October 20

Time: 1:00-2:30 p.m.

Fee: \$8 members/\$20 nonmembers

Instructor: Kelly Summerford

FINANCIAL LITERACY II

Are you the person that skips over the business articles in the media? The classes in this four-session course will focus on the basics of investing...what are the different classes of stocks, bonds, mutual funds, ETFs, and what factors in the economy affect the market and how they might affect your portfolio. This information will help you to make informed decisions when creating your personal investment portfolio. This class is informative; the instructor is an economics teacher and not affiliated with any commercial investment firm.

Date: Wednesdays, October 20, 27, November 3, and 10

Time: 3:00-4:30 p.m.

Fee: \$32 members/\$80 nonmembers

Instructor: Linda Eckert

NATIONAL MONUMENTS OF THE SOUTHWEST: NATURAL HISTORY AND SELDOM VISITED NATIVE AMERICAN SITES

National Monuments are established to protect lands of scenic, historic, or cultural significance, or fragile and vulnerable ecosystems. The dozen plus national monuments we will visit have all of these elements. Many of them are sacred Native American lands or contain sacred sites. These are majestic and picturesque places, not so well-known as the national parks, that most Americans, especially us easterners, do not get the chance to visit. Session one focuses on places of extraordinary scenic beauty and biological diversity. In session two we will visit sites of Native American cultural significance. Kuhn has traveled the west extensively, studying and photographing the ecology, geology, history and ethnography of the region.

Date: Wednesdays, October 27 and November 3

Time: 9:00-10:30 a.m.

Fee: \$16 members/\$40 nonmembers

Instructor: Robert J. (Jeff) Kuhn

TACTICAL COMMUNICATIONS: COMMUNICATING IN A CRISIS

Quickly and clearly communicating is essential when emergencies happen. This session will address how to most effectively get the message across to 911 as well as to others in the immediate area of the crisis. Verbal, para-verbal and non-verbal communication with both victims and perpetrators will also be covered.

Date: Wednesday, October 27

Time: 11:00 a.m.-12:30 p.m.

Fee: \$8 members/\$20 nonmembers

Instructor: Chris Hertig

FLIGHT 93 20TH ANNIVERSARY

Twenty years after the crash of Flight 93 during the September 11 attacks, how has the site changed for the families who lost loved ones? WITF's Tim Lambert has a unique perspective as a former landowner of property that is now part of the national memorial.

Date: Wednesday, November 3

Time: 11:00 a.m.-12:30 p.m.

Fee: \$8 members/\$20 nonmembers

Instructor: Tim Lambert

USING GEOSPATIAL TECHNOLOGIES TO ANALYZE AND MAP CURRENT PUBLIC HEALTH ISSUES IN YORK COUNTY - A COLLABORATION BETWEEN WELLSPAN HEALTH AND YORK COLLEGE OF PENNSYLVANIA

Even before the COVID-19 pandemic, York Countians have experienced numerous critical public health issues. As a primary public health management organization, Wellspan health is at the forefront in the effort to address and solve these issues. This class will describe a collaboration between WellSpan and York College of Pennsylvania geographic information systems (GIS) students in mapping and analyzing the geographic distribution and severity of several of these issues and the projects that were completed to present the results.

Date: Wednesday, November 3

Time: 1:00-2:30 p.m.

Fee: \$8 members/\$20 nonmembers

Instructors: Steve Beck and Stephanie Voight

ONCE WHEN YORK WAS FIRST CAPITAL

An overview of how York, Pennsylvania, developed (or constructed) and lost the title of first capital of the United States and became home to the first constitution.

Date: Wednesday, November 10

Time: 11:00 a.m.-12:30 p.m.

Fee: \$8 members/\$20 nonmembers

Instructor: Jim McClure

ESCAPE FROM FREEDOM AND THE TWILIGHT OF DEMOCRACY

Based on Erich Fromm's book, *Escape From Freedom*, and Ann Applebaum's book, *Twilight of Democracy*, this course will examine why human civilization has been and remains willing to submit to authoritarian rule. Using the insights of psychoanalysis as probing agents, Fromm's work analyzes the illness of modern civilization as witnessed by its willingness to submit to totalitarian rule. Anne Applebaum explains the current lure of nationalism and autocracy.

Date: Wednesday, November 10

Time: 1:00-2:30 p.m.

Fee: \$8 members/\$20 nonmembers

Instructor: Steve Beck

OUR MOST CONTROVERSIAL NATIONAL MONUMENTS

This course presents three amazing new national monuments: Owyhee in Nevada, Grand Staircase-Escalante, and Bears Ears, both in Utah. We will focus mostly on the ecology and ethno-history of these special places; however, great political conflict has arisen over their designations by President Obama. Add to that even more conflict over their partial disestablishments by a certain subsequent president. We will learn something of the convoluted landscape of our public land policies.

Date: Wednesday, November 17

Time: 9:00-10:30 a.m.

Fee: \$8 members/\$20 nonmembers

Instructor: Robert J. (Jeff) Kuhn

A BRIEF REVIEW OF THE HUMAN CIRCULATORY SYSTEM

This course will trace the circulation of a red blood cell from the heart to the lungs to be oxygenated, back to the heart to be pumped to the body to provide oxygen to the organs of the body, and back to the heart to be re-oxygenated. We will cover some common pathologic problems including heart failure, hypertension, arrhythmias, strokes, heart attacks, pulmonary emboli, and intermittent claudication. We will touch on measures of prevention, but not an exhaustive review of treatment meds.

Date: Wednesday, November 17

Time: 1:00-2:30 p.m.

Fee: \$8 members/\$20 nonmembers

Instructor: Dr. Robert Fawcett

Mayer
WEALTH ADVISORY
OF JANNEY MONTGOMERY SCOTT LLC

HOLLY A. MAYER, CFP®, CLTC®

First Vice President / Wealth Management
Financial Advisor

Janney

Janney Montgomery Scott LLC
2315 N. Susquehanna Trail, Suite A, York, PA 17404
hmayer@janney.com
717.779.2764 | TF 800.999.0503

© JANNEY MONTGOMERY SCOTT LLC • MEMBER: NYSE, FINRA, SIPC • REF. 110053-0920



OLLI is excited to share that we have a new, and much improved website! After July 22, Go to olli.psu.edu/york and explore the new site. To acclimate our members to the new website, we will hold three sessions, "Navigating OLLI York's New Website." The sessions are free, but registration is mandatory.

Monday, August 9, 1:00-2:00 p.m. at Wisehaven, [Register](#)

Tuesday, August 10, 2:00-3:00 p.m. via Zoom, [Register](#)

Thursday, August 12, 9:00-10:00 a.m. via Zoom, [Register](#)



An online evaluation will be sent after the completion of each course you attend. Please take two minutes to complete these evaluations. Our goal is to have an 85% evaluation completion rate for each course. The OLLI staff, Curriculum Committee, and instructors thank you in advance!

SPECIAL INTEREST GROUPS (SIGS)

OLLI's Special Interest Groups (SIGs) typically evolve from courses whose participants decide to continue meeting on a regular basis to further pursue their area of study or interest. SIGs are open to all OLLI members who wish to join. Be sure to contact OLLI if you have any suggestions for a group of special interest to you!



Knitting SIG

The Knitting Group meets every Thursday at 1:30 p.m. All levels of knitting and crochet are welcome. This group is very informal but does send out a weekly reminder to those who regularly attend. Sometimes only two people come, other times there can be as many as ten or twelve! Inquiries can be directed to Judy Leece at leecesfleeces@yahoo.com.



Walking/Hiking SIG

Inquiries can be directed to Patti Baughman at phbaughman333@gmail.com. Upcoming hikes/walks are always detailed in our weekly e-newsletter.



Cycling SIG

Inquiries can be directed to Phil Shar at pmshar1@hotmail.com. Upcoming bike rides are detailed in our weekly e-newsletter.




Blogging SIG

The blogging SIG is a writing group with members' blog sites and posts as mechanisms for sharing the writing with others. Members meet regularly to learn how to set-up and manage a simple blog site and assist each other write material on topics of their choice. Inquiries can be directed to Steve Beck at sbeck352@gmail.com.



Spouses Speak SIG

The Spouses Speak Special Interest Group (SIG) is designed and dedicated to OLLI spouses who are caregivers for their partners. Members draw on collective expertise and wisdom to support one another as they hold it together for their respective families. This SIG provides a safe space to discuss, connect, share, think ahead, and to tend to your own very critical needs. This SIG meets monthly. Inquiries can be directed to Bernadette Black at bblack50@gmail.com.



**Working
alongside
you and
your family.**

Providing personalized
care and comfort for
patients and families in
south central Pennsylvania.

Your care, your community, your Hospice.

www.hospicecommunity.org

The Ann B. Barshinger Center
235 St. Charles Way
Suite 250, York, PA • (717) 793-2113

HOSPICE
& COMMUNITY CARE

THURSDAY COURSES

THURSDAY CLASSES: ALL ONLINE VIA ZOOM

STRIVING FOR A THOUGHTFUL, CIVIL CONVERSATION ON TALK RADIO

At a time when the nation is often divided politically and those that don't think alike don't trust one another, WITF-FM (Harrisburg) *Smart Talk* program strives for civil, thoughtful conversation on a variety of issues that impact Pennsylvanians. Smart Talk host and Executive Producer Scott LaMar addresses how topics are chosen, how to really listen to favorite and difficult conversations, and his dream interview.

Date: Thursdays, September 9 and 16

Time: 1:00-2:30 p.m.

Place: Online, Zoom (link will be sent the day before the class)

Fee: \$16 members/\$40 nonmembers

Instructor: Scott LaMar

CHANGES IN IMMIGRATION PROCESS VIA THE BIDEN/HARRIS ADMINISTRATION

This course will delve into what is changing in the immigration processes, or is expected to change, through the Biden/Harris administration and how our country goes about setting quotas for different groups/classifications (e.g., merit-based, extended family members, etc.)

Date: Thursday, September 16

Time: 11:00 a.m.-12:30 p.m.

Place: Online, Zoom (link will be sent the day before the class)

Fee: \$8 members/\$20 nonmembers

Instructor: Shoba Sivaprasad Wadhia

LIFE BEYOND EARTH: WHEN CHEMISTRY BECOMES BIOLOGY

Worlds in our solar system and beyond may harbor life. In this short, comprehensive class, we explore definitions and forms of life, how life might be detected from a distance and other timely issues in the search for extraterrestrial life, as well as the creation of alien life in the lab and the feasibility of various science fiction ideas. Very soon after the planet formed, Earth chemistry evolved into Earth life. Join us as we explore how this process might unfold on other worlds!

Date: Thursday, September 23

Time: 1:00-2:30 p.m.

Place: Online, Zoom (link will be sent the day before the class)

Fee: \$8 members/\$20 nonmembers

Instructor: Rick Baird and Victoria C. Leo

SIKHISM: AN I'M OK, YOU'RE OK KIND OF PHILOSOPHY

Sikhism is grounded in religious freedoms and autonomy. So, how about you ask me questions and I will respond? I will also plan to share some of the key tenets of Sikhism that I am most passionate about such as our shared humanity, the divine within each one of us, the biggest victory in the journey of life, Sikh identity, ways to live a life with integrity, community meals — called 'Guru Ka Langar,' and so much more! Please bring your curiosity and a big open heart!

Date: Thursday, September 30

Time: 1:00-2:30 p.m.

Place: Online, Zoom (link will be sent the day before the class)

Fee: \$8 members/\$20 nonmembers

Instructor: Sukhdeep Gill

FIRST LADIES: NOT JUST "THE LITTLE WOMEN"

As the President's wife, first ladies are often in the public eye, but we don't necessarily know much about them. Peg Chown will introduce you to some first ladies who were much more than the spouse of the President. Some were quite accomplished before moving into the White House; some made their mark only after their husbands took office. All these women were formidable. As we examine the lives of these women, we'll also see how the role of First Lady has changed over time.

Date: Thursdays, October 7, 14, and 21

Time: 1:00-2:30 p.m.

Place: Online, Zoom (link will be sent the day before the class)

Fee: \$24 members/\$60 nonmembers

Instructor: Peg Chown

POST-IMPRESSIONISM

Post-Impressionism encompasses the work of artists who absorbed the color theory of the Impressionists but also chose a more expressive and subjective approach to their paintings. Among the artists to be discussed will be Vincent van Gogh, Paul Gauguin, and Georges Seurat, as well as Paul Cézanne (described by both Pablo Picasso and Henri Matisse as the "father of us all").

Date: Thursday, November 4

Time: 9:00-10:30 a.m.

Place: Online, Zoom (link will be sent the day before the class)

Fee: \$8 members/\$20 nonmembers

Instructor: Kathryn McClintock

FINLAND - THE HAPPIEST COUNTRY IN THE WORLD.

WHY ON EARTH?

According to United Nation's World Happiness Report, Finland is the happiest country in the world for the third year in a row. What makes a small, cold and sparsely populated country, with a people typically described as surly, quiet, and a tad anti-social, stand out as a particularly happy place to live? Is the key to happiness having little or no expectations, or is it hidden in a dark sense of humor? Join the class to find out.

Date: Thursday, November 11

Time: 9:00-10:30 a.m.

Place: Online, Zoom (link will be sent the day before the class)

Fee: \$8 members/\$20 nonmembers

Instructor: Anna Rafsa

ANTICIPATING PARADISE:

THE HISTORIC EPHRATA CLOISTER STORY

Historic Ephrata Cloister tells the story of an 18th century community of nearly 300 members, both celibate and married, who sought to prepare for a heavenly life while confronting earthly struggles. During the community's zenith, members constructed significant architecture, created original art and music, including works by the first American female composers, and developed a thriving publishing center. This session explores the life and legacy of this National Historic Landmark.

Date: Thursday, November 18

Time: 9:00-10:30 a.m.

Place: Online, Zoom (link will be sent the day before the class)

Fee: \$8 members/\$20 nonmembers

Instructor: Michael Showalter



HANDS



FACE



SPACE

At the time of catalog design, OLLI at Penn

State York is uncertain of the COVID-19

mitigation procedures that will be in place

for our fall semester. We will adhere to

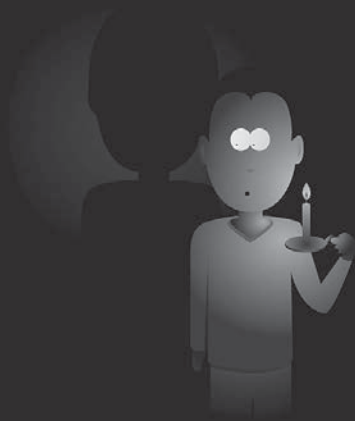
all COVID-19 policies and practices of

The Pennsylvania State University. These

policies and practices will be shared upon

registration for each in-person course.

NEVER Be in the Dark About Anything OLLI-Related!



- ✓ Read our weekly e-newsletter
- ✓ Read OLLI emails
- ✓ Look on our NEW OLLI website, olli.psu.edu/york

We Have You Covered!

FRIDAY COURSES

FRIDAY CLASSES: ALL ONLINE VIA ZOOM

THE AMAZING LIFE AND LEGACY OF PEARL S. BUCK

Are you interested in learning about Pearl S. Buck, the first woman to win both the Nobel Prize for Literature and the Pulitzer Prize for Fiction? This course will provide an overview of Buck's life and career, from her literary achievements to her international humanitarian legacy. This course will also discuss the Pearl S. Buck House in Bucks County, Pennsylvania.

Date: Fridays, September 10, 17, and 24

Time: 1:00-2:30 p.m.

Place: Online, Zoom (link will be sent the day before the class)

Fee: \$24 members/\$60 nonmembers

Instructor: Jay Cole.

SUSQUEHANNA SOURCE TO THE SEA

I assume that most if not all of the participants in this course will have personal experience in the Chesapeake Bay watershed. I also suspect that many of the participants will not understand what a watershed is. Through this course students will learn the meaning and the urgency of protecting the water that flows from New York and Pennsylvania into the Chesapeake Bay. Definitions and understandings of the different aquifers that nourish the Chesapeake Bay will be clarified.

Date: Friday, October 1

Time: 9:00-10:30 a.m.

Place: Online, Zoom (link will be sent the day before the class)

Fee: \$8 members/\$20 nonmembers

Instructor: Jack Grove

WE WERE THERE, TOO: STORIES OF PIONEER APPALACHIAN TRAIL WOMEN

Providing brief history of the making of the Appalachian Trail, and including the little-known stories of women whose contributions made the Appalachian Trail possible. Participants are encouraged to read any of the readily available books about the Appalachian Trail and to make themselves familiar with the trail in Pennsylvania by visiting and hiking any section. Visiting the Appalachian Trail Museum in Pine Grove Furnace State Park near Carlisle, Pennsylvania, is also encouraged.

Date: Friday, October 1

Time: 11:00-12:30 a.m.

Place: Online, Zoom (link will be sent the day before the class)

Fee: \$8 members/\$20 nonmembers

Instructor: Gwen Loose

RADIATION HEALTH ISSUES

Become aware of the various types of radiation, and their relative health risk, that we encounter in normal life-time activities. This two-part Zoom lecture is designed for persons with no background in physical sciences.

Date: Fridays, October 22 and 29

Time: 10:00-11:30 a.m.

Place: Online, Zoom (link will be sent the day before the class)

Fee: \$16 members/\$40 nonmembers

Instructor: John Ricca

YORK'S FRENCH CONNECTION - ARLES, FRANCE

Hello, or bonjour, as the French would say! This greeting has been shared for more than sixty-five years between people of York, Pennsylvania, and Arles, France! Learn the history behind the York/Arles connection and York Twinning Association while viewing photos of Arles and highlights of student and adult exchange trips throughout the years. No French required!

Date: Friday, November 5

Time: 11:00 a.m.-12:30 p.m.

Place: Online, Zoom (link will be sent the day before the class)

Fee: \$8 members/\$20 nonmembers

Instructor: Elizabeth Stein

SULLIVAN STORY OF SERVICE AND SACRIFICE

The Sullivan Brothers of Waterloo Iowa represent the service and sacrifice of those who served during WWII. The five brothers, close in age, worked in factories, failed to finish high school, and played hard. Their motto was "we stick together." When the war broke out, they enlisted as a group. In November 1942, they died together when their ship went down near Guadalcanal. It was, and remains, the largest single family loss in American combat history.

Date: Friday, November 12

Time: 11:00 a.m.-12:30 p.m.

Place: Online, Zoom (link will be sent the day before the class)

Fee: \$8 members/\$20 nonmembers

Instructor: Dr. Bob Neymeyer

HOW THE AMISH DEAL WITH THE CHALLENGES OF TECHNOLOGY

The Amish are often thought of as a group that for traditional and religious reasons rejects all aspects of modern technology. This is false. The Amish favor selective uses of the latest technical devices and employ a well-thought-out system of evaluating technology before its use. Come and learn more with this engaging talk and PowerPoint presentation and discussion!

Date: Friday, November 19

Time: 11:00 a.m.-12:30 p.m.

Place: Online, Zoom (link will be sent the day before the class)

Fee: \$8 members/\$20 nonmembers

Instructor: Nick Siegert



FRIDAYS WITH THE MAESTRO

One of OLLI's most popular classes is the one "conducted" by the York Symphony Orchestra's (YSO) Jody and Louis Appell, Jr. Music Director, Lawrence Golan. Maestro Golan returns to OLLI this year to introduce us to music about, or inspired by, heroes. Join us as this dynamic conductor and educator discusses the

heroic music to be performed at each YSO Classical Series concert!

All classes are held on Fridays, with the concerts held the following evening. The fee for these classes includes a \$9 voucher for a ticket to Saturday evening's concert at the Louis Appell Performing Arts Center in the Strand-Capital Complex, 50 North George Street, York, Pennsylvania.

Friday, October 1, 12:30-2:00 p.m.

MOZART & TCHAIKOVSKY

Lawrence Golan, *Conductor*

Hai-Ye Ni, *Cello*

CHEVALIER DE SAINT-GEORGES Symphony No. 1

PYOTR ILYICH TCHAIKOVSKY *Variations on a Rococo Theme*

WOLFGANG AMADEUS MOZART Symphony No. 41 "Jupiter"

Friday, October 29, 12:30-2:00 p.m.

MR. & MRS. SCHUMANN

Lawrence Golan, *Conductor*

Stephanie Cheng, *Piano*

ROBERT SCHUMANN *Overture, Scherzo and Finale*

CLARA SCHUMANN Piano Concerto

ROBERT SCHUMANN Symphony No. 1 ("Spring")

Friday, November 12, 12:30-2:00 p.m.

THE SIX BACH BRANDENBURGS

Lawrence Golan, *Conductor*

Gwyn Roberts & Rainer Beckmann, *Recorders*

Soloists from the Orchestra

JOHANN SEBASTIAN BACH Brandenburg

Concertos No. 1-6

The fee for OLLI members is \$17, and for nonmembers is \$29 each class. If you already purchased your season ticket for the York Symphony, you may register for the class for \$8 for OLLI members and \$20 for nonmembers.

With your class registration you are entitled to a voucher for a ticket to the concert. The OLLI office will mail your vouchers to your home. It is your responsibility to call or visit the York Symphony box office to redeem it for a ticket. You may use the voucher to upgrade your ticket, if you wish. The box office phone number is 717-846-1111.

All classes will be on Friday from 12:30-2:00 p.m. If we are back at the Penn State York campus, the course will be in-person. If we are at Wisehaven, the course will be via Zoom.

TOURS

MILLBOURNE TOUR (APPELL PROPERTY)

This tour will be up to three hours long, depending on members' questions and degree of fatigue. The main groundskeeper will conduct the tour and share information about the plantings at the estate, as well as the estate's history and structures. This tour should interest hobbyist gardeners and landscapers as well as those who are simply curious about the Appell's property and contributions to York. Good walking shoes are a must for the tour.

Date: Thursday, October 14

Time: 9:00 a.m.-12:30 p.m.

Place: Directions will be emailed after registering

Fee: \$8 members/\$20 nonmembers

Instructor: Chris Paules

SURPRISES TO SEE IN THE DELTA AREA

Start your tour at the Old Line Museum in Delta, Pennsylvania. The museum emphasizes the area's Welsh heritage and the Peach Bottom slate industry. You can see the Welsh quarrymen's cottages built in the 1850s, Indian artifacts, railroad memorabilia, a slate quarry, slate splitting demo, graveyard with slate tombstones with Welsh inscriptions and the famous Rehoboth Welsh Church. Participants can enjoy lunch on their own at Red Lion's Lions Pride Restaurant following the tour.

Date: Friday, October 15

Time: 10:00 a.m.-4:30 p.m.

Place: Old Line Museum, 602 Main Street, Delta PA 17314

Fee: \$8 members/\$20 nonmembers

Instructors: Don Robinson and Dr. Roger Wilson

A WALKING TOUR OF YORK CITY

Joan and Tim Fulton have lived in and been champions of York City for twenty-five years. Over the years they've seen and participated in many initiatives to help improve the city. Enjoy the neighborhoods, the walkability, the history and a bird's eye view from their Codo roof. It's a chance to see the city up close and to find reasons to return often.

Date: Thursday, October 28

Time: 11:00 a.m.-12:30 p.m.

Place: We will be walking about 2 miles on city streets. There are bathrooms and some seating options along the way. Wear comfortable walking shoes because the sidewalks can be uneven. Bring some money so you can grab some lunch or shop at one of the local shops after the tour. We will leave from the Philadelphia Street entrance to Central Market. Parking is available in one of the city garages or along the street.

Fee: \$8 members/\$20 nonmembers

Instructors: Joan and Tim Fulton

INSTRUCTOR BIOS

* Bios are in alphabetic order by last name

REVEREND ROBERT ANDERSON has presented several OLLI classes. He loves traveling and photography and enjoys sharing this love with OLLI members.

MARY BACH is a nationally-recognized, independent consumer advocate, as well as a volunteer. She now chairs the Association for the Advancement of Retired Persons (AARP) Consumer Issues Task Force. She has appeared on numerous local and national television programs and has been interviewed on radio talk shows and newspapers internationally. She appears on *The Scam Watch* segments monthly on Fox 43 in York. Her YouTube videos are titled "Outsmarting the Scammers with Mary Bach."

RICK BAIRD earned degrees in chemistry and chemical engineering from Caltech and MIT and spent decades creating exterior paints for airplanes. In retirement, he spends most of his day thinking about astronomy and reading spouse Victoria Leo's novels. He is also busy creating astro-art based on the latest astrochemistry research.

WILLIAM "BUD" BEAL graduated from Geneseo College in New York, with a bachelor's degree in history and then completed his master's in education at SUNY Albany. He then taught United States history to high school students for seven years. He has been a history buff all his life.

STEVE BECK has a B.A. in urban studies and an M.A. in geography and environmental planning. He has more thirty years of professional experience in the use of geospatial technologies including geographic information systems (GIS) in creating, analyzing, and publishing geographic data in the form of digital maps and web pages. He has more than eight years of experience in teaching fundamentals of GIS and mapping at the college level as an adjunct instructor. Beck currently teaches world regional geography and geographic information systems at York College of Pennsylvania.

MARC BENTON was an active Presbyterian pastor for thirty years. His interest in life after death was stirred while he was an atheist searching for God. After his conversion and some vivid experiences with God, his faith in life following physical death was broadened.

JUDITH BOWEN is a health care professional with forty-two years of experience as an occupational therapist. She is a clinician and an educator and was named as a Fellow in

the American Occupational Therapy Association. She has experience in all areas of health care including mental health and has significant experience in presenting workshops.

DEBBIE BUTCHER is a classically trained vocalist who has performed with York Oratorio Society, York Chamber Singers, and the York Symphony Chorus.

VINCE BUTERA practiced orthopedic surgery in York for thirty years and was a founding member of Orthopedic Spine Surgery (OSS.)

ELYSE BYRNES has been a hibernophile, lover of all things Ireland, for most of her life. She received her master's degree in Irish studies from the National University of Ireland, Galway.

MARK CASTEEL has been homebrewing for the last thirteen years, and is an active member in the York Area Homebrewer's Association. He's also a member of the American Homebrewer's Association.

PEG CHOWN is a recovering attorney and former director of OLLI at Penn State York. Before OLLI, she was an assistant attorney general for the State of Minnesota, an Air Force JAG officer, taught law and politics at the graduate and undergraduate levels, and was dean of extended campus programs at three universities.

JAY COLE has taught about Pearl S. Buck (PSB) for the West Virginia University OLLI. He is co-editor of *Beyond the Good Earth: Transnational Perspectives* on PSB and serves as treasurer of the PSB Birthplace Foundation.

MEGAN CRALEY received a bachelor's degree in biology from West Chester University in 2009. For the last seven years she has worked at the York County Area Agency on Aging. She began as a care transitions coach where she counseled older patients to prevent readmission after discharge from a hospital stay. Craley then moved onto care management where she visited with consumers to determine their needs and set up appropriate services. For the last four years she has been the agency's health and wellness coordinator.

MOLLY DALLMEYER is a twenty-five year veteran of teaching high school social studies, specifically the topic of the Holocaust. Dallmeyer is a proud Penn State graduate (1990 B.S., 1995 master's degree) and currently teaches at Dallastown Area High School, where she teaches twelve classes of Holocaust studies per year.

LINDA ECKERT was a high school social studies teacher for thirty-three years with fifteen years teaching a senior economics course. She has taught financial literacy to employees of the school district where she worked. She also taught an adult education program in the township of Southold, New York.

ELLEN ENGDAHL EHLENBECK is an artist and a teacher, with a B.F.A. in painting and an M.A. in graphic design. She teaches at Harrisburg Area Community College and Creative York. She is active in the local art scene, passionate about art history, and graphic design, and is an enthusiastic supporter of downtown York.

DR. ROB FAWCETT is a retired family medicine and sports medicine physician who practiced and taught new physicians those disciplines at York Hospital and in his private practice in Hanover, Pennsylvania. He is a lifelong exercise enthusiast, and in 2012 was named Pennsylvania's family physician of the year.

JOAN AND TIM FULTON Joan Fulton retired as executive director of the York County Assistance Office (now the Pennsylvania Department of Human Services) in 2011. Tim Fulton was the vice president of Susquehanna Real Estate until his retirement. He also volunteered many hours to the betterment of York and York County.

SUKHDEEP GILL, professor of human development and family studies, is a trainer-facilitator in creating awareness and resilience in education and mindfulness-based practices. She teaches the Art and Science of Human Flourishing at Penn State York.

JACK GROVE was born and raised on the shores of the Susquehanna River. He left Pennsylvania at age seventeen to spend the rest of his life traveling the world's oceans. Grove has visited more than 120 countries.

CHRIS HERTIG taught college for twenty-eight years and was a nuclear security training administrator for three years. He has published hundreds of articles, books, reviews, and columns. Hertig is a member of the York History Writers Roundtable, ASIS International, and is on the board of the International Foundation for Protection Officers. He is a past president of the Pennsylvania Association of Criminal Justice Educators.

ROSS HETRICK is the founder and president of the Thaddeus Stevens Society. He has a B.A. in psychology from the University of Virginia and was a business reporter for twenty years.

KATIE HORNE is a full-time Realtor. She's been helping people buy and sell their homes for more than forty-three years!

JERI JONES has been conducting OLLI classes since 2008. He has a B.S. in geoarchaeology and is retired from the York County Parks after thirty-eight years. He has studied the geology of southeastern Pennsylvania for forty years. He has written six books on local geology, numerous articles, and narrated a video series known as *Time Walk*.

CHARLES "CHIP" KAUFFMAN is an adjunct faculty member at York College of Pennsylvania where he teaches world languages. He has taught Italian, German, and Russian at Penn State York. He is a retired certified United States government linguist and author of various articles on language.

ROBERT J. (JEFF) KUHN holds a Ph.D. in ecology from The Pennsylvania State University. He also is on the faculty at York Suburban High School and an adjunct faculty member at Penn State York. A career biologist and ecologist, as well as an accomplished photographer, he has produced OLLI programs on the Great Plains, the Desert Southwest, Alaska and the Arctic, with a focus on Native American culture.

SCOTT LAMAR is the host and executive producer of WITF-FM's *Smart Talk* program. LaMar has worked in broadcasting as a radio and TV talk host and producer, news director, manager and sports play-by-play announcer. LaMar has won a national Excellence in Journalism award and dozens of state broadcasting awards.

TIM LAMBERT is news director at WITF and one of four trusting news coaches nationwide.

VICTORIA C. LEO originally planned a career in astrochemistry but pivoted to graduate degrees in biological anthropology and psychology and a career teaching anatomy and physiology to future medical professionals at various colleges and universities. Now retired, she writes well-regarded science fiction.

TYLER LERMAN is a financial adviser and certified financial planner practitioner with Smith Wealth Advisory Group of Janney Montgomery Scott, located in York, Pennsylvania. Additionally, Lerman has achieved the Chartered Financial Consultant (CHFC®), Accredited Investment Fiduciary (AIF®), Retirement Income Certified Professional (RICP®), National Social Security Advisor (NSSA®), and is Certified In Long-Term Care (CLTC®) designations.

GWEN LOOSE has been the executive director of the York County Rail Trail Authority since 1997, and is a certified Parks and Recreational Professional. She is vice-president and exhibit curator of the Appalachian Trail Museum, Inc. and a board member of the York Hiking Club.

KATHRYN MCCLINTOCK has a master's degree in art history from The Pennsylvania State University and has taught the introduction to art course through Penn State Outreach for more than twenty years.

JIM MCCLURE, author and historian, is the former editor of the *York Daily Record* and Atlantic group editor, USA Today Network.

PAT MCGRATH is an inveterate reader and has led the OLLI book group for many years. She began facilitating Video Discussion Courses (VDC) in winter 2020.

BILL MINARIK backpacked the Appalachian Trail from Georgia to Maine at sixty-eight years old (2190.9 miles). He kayaked the entire Susquehanna River From Cooperstown New York to the Chesapeake Bay (444 miles). Minarik is a senior director of the National Aquarium, executive director of the Susquehanna Riverkeeper Association, and field director B.S.A.

CURTIS NELSON is a retired college music professor who taught for more than thirty years. He has a bachelor of music and a master's degree in church music, is a conductor, soloist, performer, and director in musical theatre, cabaret, jazz, and classical concerts.

HILLARY NELSON began teaching at Penn State York in 1995 and has been an ardent fan of comic books since his early teens. He started teaching classes on the history of comics in 2003 and has since published a textbook on the subject. He holds a B.A. and M.A. from The Pennsylvania State University.

ROBERT NEYMEYER is the historian at the Sullivan Brothers Iowa Veterans Museum in Waterloo and has his Ph.D. from the University of Iowa. He conducted the research and did the writing for the exhibit narrative for the Iowa Veterans Museum that opened in November 2008. He has done extensive research on the five Sullivan brothers who lived in Waterloo.

CHRIS PAULES is the groundskeeper at the Millbourne property and is very knowledgeable about the plants at the estate as well as the estate's history and structures.

JOHN M. PORTER, JR. was named executive vice president and chief operating officer of WellSpan Health in January 2015. He has been active in the healthcare field for over thirty years as both a consultant and healthcare facility administrator. Porter is a graduate of The Pennsylvania State University with a bachelor of science degree in Health Planning Administration.

ANNA RAFSA is a clinical psychologist, living in the south of Finland, with her husband, three children, and two dogs. Having worked within the field of mental health for ten years, the concept of happiness is near to her heart.

BARRY RAUHAUSER is an active cyclist and hiker who likes to carry cameras around on his adventures. He began his interest in photography while taking photos of bicycle races, but the past year of the pandemic has prompted his new interest in all forms of nature photography.

JOHN RICCA served for twenty-two years in the U.S. Army, and worked another thirty-two years as a civilian technical specialist serving the Departments of Defense and Homeland Security, primarily in the areas of nuclear counter-proliferation and counter-terrorism. His technical specialties are nuclear physics and health physics, and he was a co-author of a study that was input to a change in the government's policy for radiation exposure to first responders. Ricca retired in June 2019.

DON ROBINSON and **DR. ROGER WILSON** are very active in the history of the Peach Bottom slate region and have given many tours in this area.

RICH SANTEL has been OLLI's movie guy since 2012.

JJ SHEFFER has been involved in the downtown York arts and culture scene for more than twenty years, and for the last decade, has devoted herself to making it a welcoming place and helping others to cultivate a sense of community.

MICHAEL SHOWALTER is the museum educator at the Historic Ephrata Cloister, a position he has held since 1996. He holds a B.A. in history from Millersville University and an M.A. in American studies from The Pennsylvania State University. Prior to joining the staff of the Historic Ephrata Cloister he worked at The State Museum of Pennsylvania in Harrisburg, PA.

NICK SIEGERT is a guide supervisor at Historic Ephrata Cloister where he has worked for the last eleven years. He supervises state and volunteer staff members and trains staff in giving guided tours of the historic site. Siegert is also in charge of visitor services and serves a number of other administrative duties. Siegert has a long interest in the Amish.

ELIZABETH STEIN was introduced to York Twinning Association as a child. Her parents were hosts during one of the first York/Arles exchanges. She has visited Arles, France and hosted many Twinning events.

MIKELE STILLMAN is from Wisconsin. She hosted a daily noon-hour segment on WISC-TV (CBS) for seven years. In 1980, she was hired by the city of Madison to initiate/coordinate outdoor events such as art fairs, concerts, festivals, and races that became public policy. Revitalizing downtown was the goal and it worked. In retirement she came to Pennsylvania and volunteers with OLLI and the Hanover Historical Society.

KELLY SUMMERFORD is a William Goodridge reenactor. He is also the director of the William Goodridge Museum in downtown York.

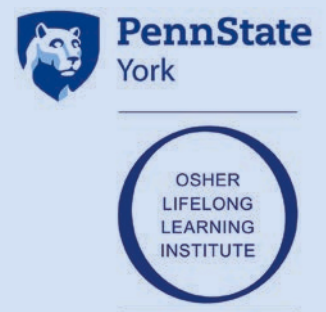
STEPHANIE VOIGHT graduated from Dickinson College with a B.S. in biology and anthropology. She then received her M.S. from the University of North Carolina at Greensboro with a focus on community health education. Voight began her career at WellSpan Health in 2011 as a community health specialist. In 2020 she became the director for community health planning and evaluation at WellSpan. She lives in Hanover with her husband and two children.

SHOBA SIVAPRASAD WADHIA is the associate dean for diversity, equity, and inclusion and a law professor at The

Pennsylvania State University Law School at University Park. She has worked in the immigration field for more than twenty years and teaches immigration and refugee related courses. She is the author of three books on immigration and numerous law review articles. She holds a J.D. from Georgetown University Law Center.

REVEREND CURT WEBER is a retired minister who has a master of divinity degree from Lancaster Theological Seminary and a bachelor's degree from Elizabethtown College. He served as pastor at St. John's Blymire's United Church of Christ in Dallastown for twenty-four years and, is Pastor Emeritus of that church. He has done extensive research on the Civil War and Abraham Lincoln. He has read and viewed over a hundred books and DVDs on each subject.

KEN WEILER, author, writer, lecturer has written several books on the subject of the Second World War. He also lectures on the American Home Front, military combat operations, logistics and aviation, and nautical technical matters. He is a member of the Hanover Area Historical Society and the Dwight D. Eisenhower Society. Weiler lives in Hanover, Pennsylvania.



Thank You TO OUR DONORS

Thank You to All of the Donors Who Have Given to OLLI in the Past Fiscal Year!

A donation of any size helps OLLI maintain low membership and course fees, enhance our educational programming, assure adequate staffing, space, equipment, and marketing for programming, and increases our financial stability and sustainability.

In collaboration with Penn State York's Office of Development, University Park's Office of Annual Giving, and our OLLI Development Committee, new levels of giving were established for OLLI at Penn State York this fiscal year.

| | |
|------------------------|----------------------|
| Donor | \$1-24 |
| Friend | \$25-99 |
| Associate | \$100-249 |
| Graduate | \$250-499 |
| Scholar | \$500-999 |
| Cum Laude | \$1,000-1,499 |
| Magna Cum Laude | \$1,500-2,499 |
| Summa Cum Laude | \$2,500+ |

MAGNA CUM LAUDE

Donna and Bob Pullo

CUM LAUDE

Mary Jane and Loyd Branim

Rich Santel

SCHOLAR

Sharon Christ

Mary Ann Dickey

Beth Gill-MacDonald and George

MacDonald

Betsy Keefer

Robert and Judy Lease

Whelan Family Fund of York

County Community Foundation

GRADUATE

Tom and Betsy Aulbach

Peggy and Bud Beal

Vince Butera

Joyce Filius

Joan and Tim Fulton

Suzanne Geubtner

Kathryn and George Haldeman

Ronald Hershner

Charles and Janice Hoffman

Sheila Martin

Pat McGrath

Andy and Nancy Miller

Ken Weiler

Michael and Cheryl Wintermyer

ASSOCIATE

Charlotte and Robert Alginger

Beverly Altland

Sara Atkinson

Lila Beedle

Marc and Trish Benton

Mary Lou Benton

Linda Bergdoll

Cheryl Breault

Regina Brenneman

Catherine and John Bush

Maureen and Robert Campbell

Sandra Carroll

David and Cindy Christiansen

Laura Cowburn

Bob and Pat Davis

Linda Eckert

Nancy Esterline

John and Jacquelin Eyster

Paul Faulise

Candy Garver

Jennifer Geubtner-May

Sandra Gilleo

Don Gogniat

Carol Greer

Sonia Grim

Karen and Michael Healey

Jay and Brenda Holcomb

Betty and Thomas Hooker

Sharon Hopkins

Ray Hovis

Steven Kanovitz

Richard and Bonnie Keepports

Anne Kline

Robert Kuhn

Karen Laino Giannuzzi

Bea Landis

Trena Landis

Wayne Lee

Alice Lynch

Lucy March

Marian-Joan and Terry McFatridge

Tom Murray

Brenda and Daniel Neff

Jean and David Norris

Ray Quickel

Don and Terry Reichard

Cindy and Pat Reynolds

Shelly Riedel

Annette Roderick

John and Penny Sanstead

Louise and Ken Scalet

Carolyn Shoop

Debra Simon

Stephen Smith

Elsie Smith
Frances Spangler
Jay Stevens
Margaret Swartz
David and Susan Werner
Betty Wills
Mary Clare Wilson

FRIEND

Kay Altland
Mary Esther and John Anderson
Bob Anderson
Linda Avillo
Barbara Bahn
Diane Barth
Anita Bartlett
Nedra Baublitz
Patti Baughman
Sally and Steve Beck
Claudia Besecker
Sonya and Harry Bloom
Barbara Bott
Bruce and Joyce Broadbent
Charles Buckley
Gene Burk
Randy and Susan Byrnes
Margo Caskey

Peggy Chown
Sandy Cooley
Diana Correll-Giuffrida
Harriet Darling
Diane Delozier
Heidi Deren
Susan Doyle
Barbara Dulichan
Lynne Eitel
Linda Florence
Donna Foxx
Mikele Garfield Stillman
Michael Garrety
Lyda Gentzler
Tom Getz and Deb Lord
Martin Goldberg
Wanda and Robert Gosnell
Joan Gumerlock
Joyce Gurreri
Harry Hamme
Phillip Hembree
Arthur Hennig
Dick and Suzy Hershey
Chris Hertig
Linda Hogg
Doris and John Jones
Carol Jones

Chip Kauffman
Delores Keener
Kathy Kessler
Sharon and Barry Kirkham
Judy Leece
Norman Lightner
Jane Long
Angela Lutze
Stacey and Joseph MacNeal
Carol Marriott
Virginia Mayer
Brenda McCleary
Joan McInnis
James Mummert
Lorna Murphy
Bradley Nicholas
Linda and John Parkes
Joan Plitt
Tracey Pullo Schutty
Barbara Reinard
Mary Reiss
Robert Rockwell
A. Vaughn Rosenthal
Joan Roser
Kate and James Ross
Brynn Rousselin
Sue Ruby

Bridget Schell
Joann Schott
Cindy and Robert Seitz
Tammy Sharp
Barbara Sleeper
Shirlee Smolin
Helen Smolko
Karen Snyder
Carol and Harry Stamer
Julie Stevenson
Darla Stover
Janice and Lynn Stump
Joanne Stump
Julian Tolbert
Ray and Betty Tuleya
Carol Vigna
Curtis Weber
Sandra Wilhide
Linda Yakacki

DONOR

Jo Anthony
Lisa Forry
John MacVeigh
Rochelle Nyman

LIFELONG LEARNING CIRCLE MEMBER

Betsy Keefer

Thank You!

THANK YOU TO OUR CATALOG SPONSORS!

American Association of Retired Persons (AARP)
Collens-Wagner Insurance
Country Meadows Retirement Communities
Hospice and Community Care
Mayer Wealth Advisory of Janney Montgomery Scott LLC
Orthopedic and Spine Specialists (OSS)
University of Pittsburgh Medical Center (UPMC)



WHAT WILL YOUR *Legacy* BE?

OLLI at Penn State York is a vibrant, exciting community where members learn, volunteer, and thrive. With assistance from the Bernard Osher Foundation, OLLI has created an endowment and we need your support to create sustainability.

WHAT IS A LEGACY GIFT?

Legacy gifts, also called bequests, planned, or estate gifts, are a crucial source of future funding that allows OLLI to continue to provide high-quality programming for years to come. It is a legacy gift to the extent that you purposefully incorporate a charitable gift into your overall financial, tax, and estate planning. Your contribution may even provide immediate tax benefits for you or tax benefits for your heirs. Some types of planned gifts also provide you with an income for life. The Pennsylvania State University provides thorough and fully transparent oversight of your gift. Designating your gift to OLLI at Penn State York ensures that OLLI at Penn State York will exclusively benefit from your generosity.

WHY GIVE A LEGACY?

- 🌱 Sustain OLLI at Penn State York for generations to come so your children and grandchildren can look forward to OLLI in their retirement.
- 🌱 Let your love of OLLI become your legacy.
- 🌱 Take advantage of the many tax benefits of legacy giving.

LEGACY GIVING EXAMPLES

Appreciated Securities

You avoid capital gains taxes on the increased value and may be entitled to charitable deduction based on the fair market value at time of transfer.

IRA Charitable Rollover

Giving directly from your IRA to OLLI is considered part of your required minimum distribution (RMD). While you do not receive a charitable income tax deduction, the transfer also does not generate taxable income.

Real Estate

When you give us appreciated property you have longer than one year, you qualify for a federal income charitable deduction. This eliminates capital gains tax

you no longer have to deal with that property's maintenance costs, property taxes or insurance.

Bequest through Your Will, Trust, or Estate Plan

Designate a specific amount or percent of the estate residual. This is the most popular type of planned gift. You have flexibility to change your plans in the event that life circumstances change.

Charitable Remainder Trusts

Transfer assets (cash, appreciated securities, real estate, etc.) into a trust, which provides you with tax advantages while also paying you income. At the end of the trust term, the remaining assets are transferred to OLLI and other favorite charities.

Life Insurance or Annuity Policy

Simply designate OLLI at Penn State York as a beneficiary on a life insurance policy, retirement plan, or other annuity policy.

Charitable Gift Annuity

Fund with cash or appreciated stock, qualify for a charitable tax deduction, and receive fixed income for life. The residual value is used to sustain OLLI. Many find this a good way to trade a volatile stock market for a fixed income.

With guidance from your advisers, The Pennsylvania State University's director of gift planning, and OLLI at Penn State York's Director can help you determine the best circumstances for you and help you create a plan that will impact OLLI for generations to come. Any gift makes a difference. For more information on the gift planning methods above, please visit <https://pennstate.planmygift.org/>

OLLI AT PENN STATE YORK'S LIFELONG LEARNING CIRCLE

All legacy gifts valued at \$5,000 or more qualify you for membership in our **Lifelong Learning Circle**. Joining the **Lifelong Learning Circle** is a way to demonstrate your commitment to lifelong learning and to inspire others to make legacy gifts.

If you are interested in receiving further information or discussing your plans to assure your gift is correctly designated to benefit OLLI, please contact OLLI at Penn State York's director, 717-771-4107. All discussions are confidential.

If you are interested in receiving further information or discussing your plans to assure your gift is correctly designated to benefit OLLI, please contact OLLI at Penn State York's director, 717-771-4107. All discussions are confidential.

MONTH AT A GLANCE

September

| MONDAY | TUESDAY | WEDNESDAY | THURSDAY Zoom | FRIDAY Zoom |
|---|--|--|---|---|
| 6 Labor Day | 7 9:00-10:30 Smart People 11:00-12:30 Transgender Child 3:00-5:30 Hollywood I: The Last Hurrah | 8 9:00-10:30 Nature Photography 11:00-12:30 Homeland Security 1:00-2:30 How You See You | 9 1:00-2:30 Civil Conversation on Talk Radio | 10 1:00-2:30 Pearl S. Buck |
| 13 11:00-12:30 Moguls 1: Peepshow Pioneers 1:00-2:30 History of Mapmaking | 14 9:00-10:30 A Visual is Worth a Thousand Words 11:00-12:30 Broadway's Golden Age 1:00-2:30 Book Club: The Four Winds 3:00-5:30 Hollywood I: I'll Cry Tomorrow | 15 9:00-10:30 Nature Photography 1:00-2:30 How You See You 3:00-4:30 The Battleship | 16 11:00-12:30 Changes in Immigration 1:00-2:30 Civil Conversation on Talk Radio | 17 1:00-2:30 Pearl S. Buck |
| 20 11:00-12:30 Moguls 2: The Birth of Hollywood | 21 9:00-10:30 A Visual is Worth a Thousand Words 11:00-12:30 My Right Knee 1:00-2:30 Basics of Homebrewing 3:00-5:30 Hollywood I: High Society | 22 9:00-10:30 Nature Photography 11:00-12:30 Boroughs of York County 3:00-4:30 The Battleship | 23 1:00-2:30 Life Beyond Earth | 24 1:00-2:30 Pearl S. Buck |
| 27 11:00-12:30 Moguls 3: The Dream Merchants 1:00-2:30 A Brief History of Jazz | 28 9:00-10:30 A Visual is Worth a Thousand Words 1:00-2:30 Healthcare Update 2021 3:00-5:30 Hollywood I: The Ghost and Mrs. Muir | 29 9:00-10:30 Nature Photography 3:00-4:30 The Battleship 1:00-2:30 My Communist Houseguest | 30 1:00-2:30 Sikhism | |

MONTH AT A GLANCE

October

| MONDAY | TUESDAY | WEDNESDAY | THURSDAY Zoom | FRIDAY Zoom |
|--|---|---|--|---|
| | | | | 1 9:00-10:30 Susquehanna Source to the Sea 11:00-12:30 We Were There Too 12:30-2:00 Friday with the Maestro* |
| 4 11:00-12:30 Moguls 4: Brother Can You Spare a Dream 1:00-2:30 A Brief History of Jazz 3:00-4:30 Exercise is Medicine! | 5 11:00-12:30 Geology PowerPoints 3:00-5:30 Hollywood I: Our Vines Have Tender Grapes | 6 9:00-10:30 Investing 101 11:00-12:30 Slave Hunters | 7 1:00-2:30 First Ladies | 8 |
| 11 11:00-12:30 Photographic Tour of Egypt's Temples 1:00-2:30 Creating and Publishing Web Maps 3:00-4:30 E.C. Comics | 12 11:00-12:30 Geology PowerPoints 3:00-5:30 Hollywood I: Waterloo Bridge | 13 9:00-10:30 Investing 101 1:00-2:30 The Challenge of Letting Go | 14 8:30-12:30 NOT ZOOM – Millbourne Tour 1:00-2:30 First Ladies | 15 10:00-4:30 NOT ZOOM – Surprises to See in the Delta Area |
| 18 9:00-10:30 Fall Prevention 3:00-5:30 Hollywood II: The Old Maid | 19 11:00-12:30 Geology PowerPoints 1:00-2:30 Book Club: Sam Hell 3:30-5:00 The Holocaust | 20 9:00-10:30 Immunizations 11:00-12:30 Getting Your Money's Worth 1:00-2:30 William Goodridge 3:00-4:30 Financial Literacy II | 21 1:00-2:30 First Ladies | 22 10:00-11:30 Radiation Health Issues |
| 25 11:00-12:30 Fords and Ferries 1:00-2:30 Life Beyond Death - Religious 3:00-5:30 Hollywood II: Mr. Blandings Builds His Dream House | 26 9:00-10:30 Lincoln and "The Boys" 11:00-12:30 German Language and Culture 3:30-5:00 The Holocaust | 27 9:00-10:30 National Monuments of the Southwest 11:00-12:30 Tactical Communications 3:00-4:30 Financial Literacy II | 28 11:00-12:30 NOT ZOOM – Walking Tour of York City | 29 10:00-11:30 Radiation Health Issues 12:30-2:00 Friday with the Maestro* |

* Friday with the Maestro: If back on Penn State York campus it will be in-person. If we are at Wisehaven, it will be via Zoom.

MONTH AT A GLANCE

November

| MONDAY | TUESDAY | WEDNESDAY | THURSDAY Zoom | FRIDAY Zoom |
|--|--|---|--|---|
| 1 11:00-12:30 Thaddeus Stevens 1:00-2:30 Life Beyond Death - Religious 3:00-5:30 Hollywood II: Niagara | 2 9:00-10:30 Virtual Museum Tours 11:00-12:30 Exploring Our Fabulous Wild East 3:30-5:00 The Holocaust | 3 9:00-10:30 National Monuments of the Southwest 11:00-12:30 Flight 93 1:00-2:30 Geospatial Technologies 3:00-4:30 Financial Literacy II | 4 9:00-10:30 Post-Impressionism | 5 11:00-12:30 York's French Connection |
| 8 9:00-10:30 Pearl Harbor 1:00-2:30 Life Beyond Death - Scientific 3:00-5:30 Hollywood II: Born to Kill | 9 9:00-10:30 Virtual Museum Tours 11:00-12:30 Photographic Tour of Dubai 3:30-5:00 The Holocaust | 10 11:00-12:30 Once When York Was First Capital 1:00-2:30 Escape from Freedom 3:00-4:30 Financial Literacy II | 11 9:00-10:30 Finland | 12 11:00-12:30 Sullivan Story of Service and Sacrifice 12:30-2:00 Friday with the Maestro* |
| 15 9:00-10:30 Real Estate 1:00-2:30 Life Beyond Death - Scientific 3:00-5:30 Hollywood II: Safety Last | 16 9:00-10:30 Virtual Museum Tours 11:00-12:30 Imposter Scams 1:00-2:30 Book Club: The Trouble with Goats and Sheep 3:30-5:00 The Holocaust | 17 9:00-10:30 Our Most Controversial Monuments 1:00-2:30 Human Circulatory System | 18 9:00-10:30 Anticipating Paradise | 19 11:00-12:30 How the Amish Deal with Challenges of Technology |
| 22 1:00-2:30 President Calvin Coolidge 3:00-5:30 Hollywood II: It Happened on Fifth Avenue | 23 9:00-10:30 Virtual Museum Tours 3:30-5:00 The Holocaust | 24 | 25 Thanksgiving | 26 |

* Friday with the Maestro: If back on Penn State York campus it will be in-person. If we are at Wisheaven, it will be via Zoom.

| | | |
|---|--|---|
| Registration Begins: Tuesday, August 17 at 8:00 a.m. for members and Tuesday, August 31 at noon for nonmembers. | | |
| OLLI AT YORK COURSE REGISTRATION | | Mail to: OLLI at Penn State York P.O. Box 410 State College, PA 16804-0410 Make checks payable to: Penn State Registration is only available by mail with this form or online. |
| Name: (Print) | | |
| Address: | | |
| Phone: | Cell: | |
| Email: | | |
| COURSE TITLE | DATE(S) | COST |
| | | |
| | | |
| | | |
| | | |
| | | |
| | | |
| | | |
| | | |
| | | |
| | | |
| COURSE TOTAL: | | \$ |
| DONATION TO: | <input type="checkbox"/> Endowment Fund <input type="checkbox"/> Program Enhancement Fund | \$ |
| ANNUAL MEMBERSHIP: | <input type="checkbox"/> New <input type="checkbox"/> Renewal | \$50 |
| * You may only renew if your membership is within 30 days of expiration | | \$ |
| PREFERRED PAYMENT METHOD: | <input type="checkbox"/> Please charge my credit card on file <input type="checkbox"/> Payment by check | (Signature on this form authorizes charge) |
| GRAND TOTAL | | \$ |
| SIGNATURE REQUIRED for Registration (If not signed, the registration office <u>will not</u> be able to process your registration.) ACKNOWLEDGMENT OF RISK, RELEASE OF LIABILITY, AND VIDEO/PHOTO CONSENT I affirm that I am freely and willingly participating in the programming and activities offered by the Osher Lifelong Learning Institute at The Pennsylvania State University ("Program"). In consideration of my participation in the Program, I agree, on behalf of myself and my executors, heirs, assigns, and any other person claiming by, under, or through me, as follows: 1. I understand and acknowledge that participating in the Program activities involves certain risks (some of which I may not fully appreciate) and that injuries, death, property damage or other harm could occur to me or others. I recognize that I have the option to not participate in these activities instead of encountering these inherent risks. I knowingly and voluntarily accept, incur and assume all risks of any injuries, damages, or harm which arise during or result from my participation in the Program, even if arising from the negligence of the program or others. 2. I consent to The Pennsylvania State University ("Penn State"), its trustees, affiliates, officers, employees, agents (collectively, "Penn State Representatives"), to photograph, video record, or audio record me engaging in activities at the Program (the "Materials"). Without expectation of compensation or other remuneration, now or in the future, I hereby grant Penn State, the irrevocable right and license to use, reproduce, adapt, modify, distribute, display or otherwise exploit the Materials for promotional or educational purposes. 3. I hereby release and forever discharge Penn State, Penn State Representatives and their insurers of any responsibility or liability of any nature to me for any personal injuries, death, property damage, other harm that I may suffer or incur either directly or indirectly as a result of my participation in the Program or use of the Materials. I HAVE CAREFULLY READ AND REVIEWED THIS ACKNOWLEDGMENT OF RISK, RELEASE OF LIABILITY, AND VIDEO/PHOTOGRAPH CONSENT. I UNDERSTAND IT FULLY AND I EXECUTE IT VOLUNTARILY WITH THE INTENT TO BE LEGALLY BOUND. | | |
| Signature: | Participant's Printed Name: | Date: |



SPEAKERS' BUREAU

Our Speakers' Bureau welcomes the opportunity to speak to your church, club, professional organization, or informal group about OLLI at Penn State York. We will cater the presentation to your needs as we share information about OLLI. Contact the office if you are interested in having us speak to your group, 717-771-4015, or complete a *Speakers' Bureau Form* at our website, olli.psu.edu/speakers-bureau

OLLI at Penn State York

1031 Edgecomb Avenue

York, PA 17403

STRETCH YOUR MIND

EXPLORE A NEW INTEREST

DISCOVER NEW WAYS TO ENJOY LIFE

WITH PEOPLE WHO LOVE TO LEARN...

...just like you!

WHERE CURIOSITY NEVER RETIRES

This publication is available in alternative media on request. Penn State is an equal opportunity, affirmative action employer, and is committed to providing employment opportunities to all qualified applicants without regard to race, color, religion, age, sex, sexual orientation, gender identity, national origin, disability or protected veteran status. U.Ed. YKO 22-1

The Pennsylvania State University encourages qualified persons with disabilities to participate in its programs and activities. If you anticipate needing any type of accommodation or have questions about the physical access provided, please call 717-771-4015 in advance of your participation or visit.

